

PBS national president and CEO visits FGCU



On behalf of WGPU-TV, FGCU dean of Instructional Technology and Broadcast Services, Kathleen Davey, right, presents a gift to PBS President Pat Mitchell in appreciation for her visit to the station.

Never lose sight of how important it is “to have one media enterprise that doesn’t have to justify its programming by how many products it can sell. Think about it! What would the world be like without violence-free children’s programming, *Morning Edition*, *Nova*, *Frontline*, *All Things Considered*, or *Great Performances*?” president and CEO of the Public Broadcasting Service, Pat Mitchell, said to an audience of WGPU-TV and WGPU/WMFO-FM loyal supporters, members, corporate underwriters, local business and political leaders, university deans, faculty and public broadcasting staff during a reception held in FGCU’s television studio in the Broadcast Building in late February.

Mitchell reminded the audience of public broadcasting’s critical role within an ever-growing array of commercial media: to provide a non-commercial, educational and informational broadcasting service to all of America’s citizens.

“The essential mission of public broadcasting and universities is to create a well-informed and appropriately involved citizenry. We’re about providing vital and vibrant information to people who want to know more...do more...be more.”

She thanked all in the room for their sup-

port and contributions to public broadcasting.

On a national level, PBS supports community outreach projects such as *Ready to Learn*, *Cyberchase* and *On Your Own Term*. By participating in these national ventures, WGPU connects the stations and the campus to the community by extending the content of broadcasts and expanding their impact.

WGPU also premiered a video highlighting the rich array of public affairs, cultural arts and educational programming broadcast by both the television and radio stations throughout the year, including local programs about hurricane evacuation, phosphate mining, the loss of HMO Medicare, and the state of the arts in Southwest Florida.

Clips of WGPU’s award-winning documentary on the opening of the Naples Art Museum, and similar documentaries on the Southwest Florida Symphony and the Sanibel Music Festival, were included.

The event was supported by WGPU corporate underwriters Publix, Northern Trust and Cleveland Clinic-Naples and hosted by **President William C. Merwin.**

Dr. Kathleen Davey is dean of Instructional Technology and Broadcast Services at Florida Gulf Coast University.

Dr. Kathleen Davey is dean of

Instructional Technology and Broadcast Services at Florida Gulf Coast University.

Governor honors Regelski with state award

Gov. Jeb Bush presented the state’s Economic Patriotism Award to **Dan Regelski**, director of the Small Business Development Center for his work and efforts to assist small business owners in their recovery from the Lake Okeechobee draught disaster and the after effects of the terrorist attacks on Sept. 11. The presentation took place in Bonita Springs during the Governor’s appearance at the Southwest Florida Chamber of Commerce.

The recognition is part of a program with Delta Airlines to honor one person

in each state for their help. The SBDC has worked closely with local representatives as well as the governor’s office to provide solutions and technical assistance to those businesses affected by the two disasters. The SBDC team attended numerous town hall meetings in Moore Haven and counseled one-to-one with business owners.

“I was honored to receive this award but more honored to work with the entrepreneurs in our small business community,” Regelski said.

see “Award” on page 2



SBDC director **Dan Regelski**, his wife, administrative assistant in Graduate Studies and Continual Learning, **Eileen Regelski**, and Gov. Jeb Bush on Jan. 24. Bush presented Dan Regelski with the state’s Economic Patriotism Award during his appearance in Bonita Springs.

Professor voted president-elect of national organization

The American School Counselors Association recently voted professor in Counselor Education **Russell Sabella**, president-elect for 2002-2003.

Sabella’s graduate courses focus on school and mental counseling, research and other scholarly activity, and service to the University and surrounding communities.

He founded the Counselor Education Resource Center and is a featured FGCU expert on topics such as Sexual Harassment Risk Reduction in Schools, Technology in Counseling, Solution-Focused Brief Therapy and Consultation, Consulting with Parents, and Peer Helper Programs and Training.

The ASCA is a worldwide nonprofit organization that supports school counselors’ efforts to help students focus on academic, personal/social and career development. ■



Dr. Russell Sabella

VISION

Volume 1 Issue 4

Editor

Audrea Anderson

Associate Editor

Kelly Authement

Design and Layout ArtistsJames Greco
Bob Klein**Circulation Manager**

Lillian Pagan

Mailing

SouthWest Direct

Vision is published quarterly in July, October, January, and April by FGCU's Office of Community Relations and Marketing, Campus Support Complex, Room 68, Florida Gulf Coast University, 10501 FGCU Blvd. South, Ft. Myers, FL 33965-6565, (941) 590-1081. Email us at communityrelations@fgcu.edu.

Vision is sent without charge to employees, alumni, and friends of the University. For access to the electronic version, visit us at: www.fgcu.edu/crm

The contents of *Vision* are based on University news items submitted to Community Relations for promotion in the mass media. Permission is granted to reprint or to excerpt written material from *Vision* for use in the media.

Programs, events, activities and facilities of Florida Gulf Coast University are available to all without regard to race, color, marital status, sex, religion, national origin, disability or age.

Florida Gulf Coast University is accredited by the Commission on Colleges of the Southern Association of Colleges and Schools to award associate, baccalaureate and master's degrees.

Award from page 1

"I have an outstanding SBDC staff and team who all really respond to the needs of our small business community. Our partnerships with chambers, offices of economic development, ECC, vo-tech schools and numerous associations and organizations help us in reaching our target clients. Through counseling, educational programs and confidentiality, we are able to help businesses respond to adversity and succeed through sales and profits." ▣

Griffin to receive University's first honorary degree

At its April 4 meeting, the FGCU Board of Trustees voted unanimously to bestow upon Ben Hill Griffin III the University's first honorary degree, Doctor of Humane Letters. The degree will be conferred on Griffin at the University's May 2002 commencement ceremony. Griffin, the University's major benefactor, is chairman of the board of Alico Inc. and an inaugural member of the FGCU Foundation board.

In nominating Griffin to receive the honor, **President William C. Merwin** writes to provost and vice president for Academic Affairs **Brad Bartel**, "Mr. Griffin is committed to the success of Florida Gulf Coast University as a valuable resource for the citizens of Southwest Florida and the entire State of Florida. His gifts have provided academic, campus facility and student benefit, and they cross the spectrum of higher education institutions' needs. In recognition of his generosity, the first academic building on campus was named Ben Hill Griffin III Hall, and the new athletics arena will be known as the Alico Arena."

Griffin has a long history of vision and generosity for FGCU. Alico Inc. and Griffin provided the land on which the campus stands. In addition to the 760 acres for the campus site, Griffin donated 215 acres of land as an endowment to the FGCU Foundation, planning funds, road construction



Ben Hill Griffin III

funds, and funds for three endowed chairs in the University's College of Business. The Alico gift established the FGCU Foundation and was recognized at the time as the largest single contribution to the State University System.

Griffin continues to support the University. In December 2001, Alico Inc. and Griffin donated \$5 million to the University to be used for student scholarships, athletics program support and an enhanced arena floor plan to include additional seating and academic space for instruction in sports management, exercise physiology, athletic training and sports medicine.

Merwin's nomination concludes by stating, "I am confident that Mr. Griffin's support for our University – in its earliest days and into the future – reflects those special qualities that signify the FGCU Doctor of Humane Letters." In their enthusiastic support of this recommendation, board members expressed their appreciation of Griffin's long-term support of the University. ▣

Head of U.K. Force Intelligence conducts research at FGCU

The U.S. Fulbright Program brought the head of the United Kingdom's Force Intelligence Bureau, Christopher Parsons, to FGCU to research the legal and ethical requirements of covert law enforcement and how best to integrate human rights principles into intelligence gathering, recording and dissemination.

Parsons' research will help show how those issues fit into the U.S. Constitution. He will identify good practice and case law that can transfer to the U.K. while standing legal and ethical scrutiny, which can assist in the efficiency and legality of transatlantic operations such as the international effort to detain alleged terrorists after Sept. 11.

Parsons is consulting with various U.S. law enforcement agencies charged with intelligence gathering and covert operations, including defense and prosecution attorneys, methods, operational processes and accountability practices.

The U.K.'s Human Rights Act of 1988 left gray areas for law enforcement agencies, including the extent of human rights for informants. Agencies have mixed views as to what is and is not acceptable.

Parsons has spent 14 years in police service with the majority of his work being in criminal investigation and is a trained hostage negotiator and senior investigating officer for

kidnap and extortion. His agency is responsible for covert operations in terms of policy formulation and management of operations, including Covert Human Intelligence Sources, formerly known as informants.

Parsons made the request to Fulbright to study at FGCU after the University agreed to accept him. He also plans to contribute to FGCU while he is here. "I would welcome the opportunity to lecture or assist any person studying or working in the criminal justice arena," he said.

The Fulbright Program, established in 1946, is the flagship international program sponsored by the U.S. Government to increase mutual understanding between the people of the U.S. and the people of other countries. Fulbright alumni include Nobel and Pulitzer Prize winners, governors, senators, ambassadors, artists, prime ministers, heads of state, professors, scientists, Supreme Court Justices, and CEOs.

FGCU offers a Bachelor of Science degree in criminal justice with career tracks in corrections, cultural diversity, forensics, juvenile justice or management/administration and credit for life experience is available. In addition, all upper division coursework for the degree is available via distance learning or during convenient classroom hours in the evenings and on weekends. ▣

FGCU hosts two award-winning writers for reading, book-signing event

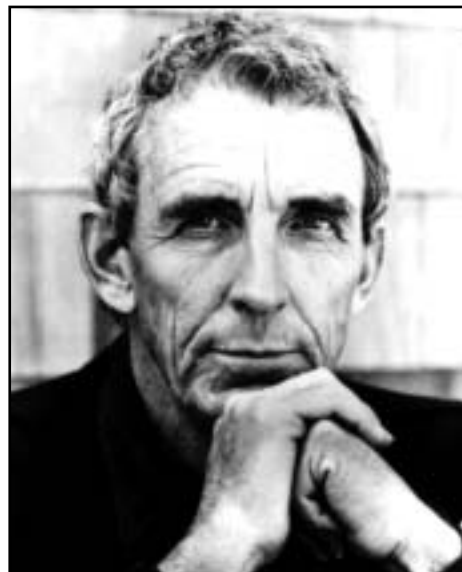
The idea of nurturing the human spirit by connecting humans with the healing power of the landscape brought together an oral reading and book signing event featuring award-winning nature writers Peter Matthiessen and **Janisse Ray** on March 7, outside in the Student Services Plaza.

Matthiessen is author of *The Snow Leopard*, which won the National Book Award, and has published works of fiction and non-fiction that have garnered him many awards, including the Award of Merit from the National Institute of Arts and Letters. In his most recent work, *The Birds of Heaven: Travels with Cranes*, Matthiessen describes the worldwide effort to save endangered cranes. Matthiessen also completed a trilogy based on the life and times of Ed Watson and his descendants set in the southwest Florida region.

Ray, author of the 1999 work *Ecology of a Cracker Childhood*, has published work in *Wild Earth*, *Orion*, *Florida Naturalist* and *Georgia Wildlife*. She taught Nature Writing and the Colloquium at FGCU in the fall 2001 semester and is a nature commentator for Georgia Public Radio.

The event was co-presented by the College of Arts and Sciences and Estero Bay Buddies, a citizen support organization for the Estero Bay Aquatic and State Buffer Preserves.

The free event was made possible by co-sponsors ECO Sanibel, Friends of the Charlotte Harbor Aquatic Preserves, Friends of Rookery Bay, Sanibel-



Peter Matthiessen



Janisse Ray

Captiva Conservation Foundation, Sierra Club of Florida/Calusa Group, Audubon Society of Southwest Florida Inc., Friends of the Lee County Library, MacIntosh Book Shop, and Canterbury School. ▣

Charlotte commissioners pledge \$250,000 to establish FGCU Center

On April 9, the Charlotte County Board of Commissioners committed \$250,000 over the next five years to the Florida Gulf Coast University Charlotte Center initiative to help with personnel, operation and marketing costs for the Center, including a full-time FGCU "information broker" to residents.

The citizens of Charlotte County want FGCU to open a center just like the one it announced last year in Collier, to help build up the county's base of leaders, administrators and professionals. To make that happen, \$500,000 over the next five years from the community is necessary because state money is not available to replicate campuses. The Commission's commitment Tuesday will provide \$50,000 a year, half the annual amount needed.

President William C. Merwin told about 100 Charlotte County movers and shakers at the home of FGCU Foundation board member Brian Presley, "We need the community's help to make this a reality."

Earlier this year, the Charlotte County Cultural Center board agreed to allow FGCU to use the building for educational goals and for information about programs, FGCU Foundation board member Dave Powell said.

A newly installed information line, local to Charlotte residents, (941) 255-7414, helps Charlotte residents stay up to date about progress on their new center. In addition, Merwin announced associate vice



President William C. Merwin and FGCU Foundation board members Brian Presley and Dave Powell speak to Charlotte County citizens about launching the FGCU Center during a reception in February at Presley's home.

president for Community Relations and Marketing **Audrea Anderson** would coordinate program efforts until a director is hired.

"We are compiling an interest list for several programs that may be offered at the Florida Gulf Coast University Charlotte Center this fall and beyond," Anderson said. "Right now it looks as though the criminal justice courses via distance learning will begin in August. While these courses are being offered by distance, students will meet at the Center, have access to a staff member once a week and meet with the professor once a month."

Programs in elementary education, nursing and other health care programs, continuing education, and certification classes are under consideration

"We will announce other programs as prospective students indicate an interest," Anderson said.

Powell and Presley are leading the fundraising initiative, in conjunction with FGCU's director of campaigns **Linda Lehtomaa**.

Pledge cards and further information are available by calling Powell at (941) 350-0884, Presley at (941) 505-9017, or Lehtomaa at (941) 590-1071. ▀

FGCU full steam ahead towards enrollment goals

While many people bask in the sun or take a relaxing boat ride down the Caloosahatchee River during Spring Break, the staff in the Office of Admissions works *full steam ahead* processing applications for fall 2002 and hosting events like the Eagle EXPO Open House.

"March Spring Break is the time of year when students and families visit college campuses for a second look in order to finalize the decision," director of Admissions, **Michele Yovanovich**, said.

During the Eagle EXPO on March 2, Admissions estimates FGCU hosted over 1,000 people, mostly pre-applicants inquiring about housing, orientation and financial aid. FGCU offered opportunities to meet faculty, receive a campus tour and learn more about academic programs. In addition, Admissions added a new program designed just for graduate students.

FGCU had 950 people registered at check-in for spring program with 603 identifying themselves as prospective students, compared to 784 and 378 respectively for the fall event.

"We are not surprised at the numbers at EXPO since we have an overall increase of 52 percent in our freshmen applications for fall," associate director of Admissions, **Kathy Peterson**, said. As of March 11, FGCU had received 1,710 applications for incoming freshmen. At this time last year, 1,125 had applied.

Questions from participants tend to become specific during the spring program. "They are concerned with exactly how much scholarship money they will be awarded and who will be assigned as a roommate," Yovanovich said.

-FGCU had 950 people registered at check-in for spring program with 603 identifying themselves as prospective students, compared to 784 and 378 respectively for the fall event.

Those types of questions led interim dean of Student Services, **Joe Shepard**, to offer assistance during one of the five Admissions and Financial Aid sessions. The session was so successful that a member of the student services team may become a part of the regular spring program, Yovanovich said.

"Another exciting component of EXPO was our academic presentations," assistant director of Admissions, **Tami Tassler**, said. This year, the Provost and vice president for Academic Affairs **Brad Bartel** encouraged presentations from

each of the colleges, which doubled offerings. "The commitment of our faculty is commendable. They always seem willing to help in the recruitment of students," Tassler said.

Prospective students also attend the open house for one other reason. About 50 pre-applicants received merit scholarships ranging in value from \$250 to \$550 totaling \$21,000. Admissions later posts the awards on the FGCU web site. The effort encourages students to make a return visit to the University, via the Internet.

The event is a major affair for Admissions. Over 130 students, staff and faculty help with various duties including registration, tours, staffing tables, presenting workshops and meeting individually with students.

"We could not implement such a large event without the dedication of our faculty, staff and student volunteers – they make an event like this possible and for that matter, exceptional," Yovanovich said.

Fall Eagle EXPO Open House is scheduled for Saturday, Oct. 19. ▀



Parents and prospective students explore presentation tables and booths during the Eagle Expo Open House on March 2 in the Student Services Plaza. Visitors toured the campus, learned about admissions and financial aid options, and spoke with professors and students. Nearly 1,000 people attended the free event sponsored by the Office of Admissions.

Michele Yovanovich is director of Admissions at Florida Gulf Coast University.

Geesaman exhibits photographs through April 21

An opening reception on March 24 formally opened *Photographs of Carefully Considered Places*, an exhibit by Minneapolis artist Lynn Geesaman, in the Library Art Gallery running through Sunday, April 21.

The exhibit includes black-and-white and color images, typically 19-inches square, that present landscapes “pre-arranged” for human enjoyment. The photographs show a particular type of altered landscape meant to delight and engage the viewer. In addition, Geesaman prints her own images, which is unusual among contemporary color photographers.

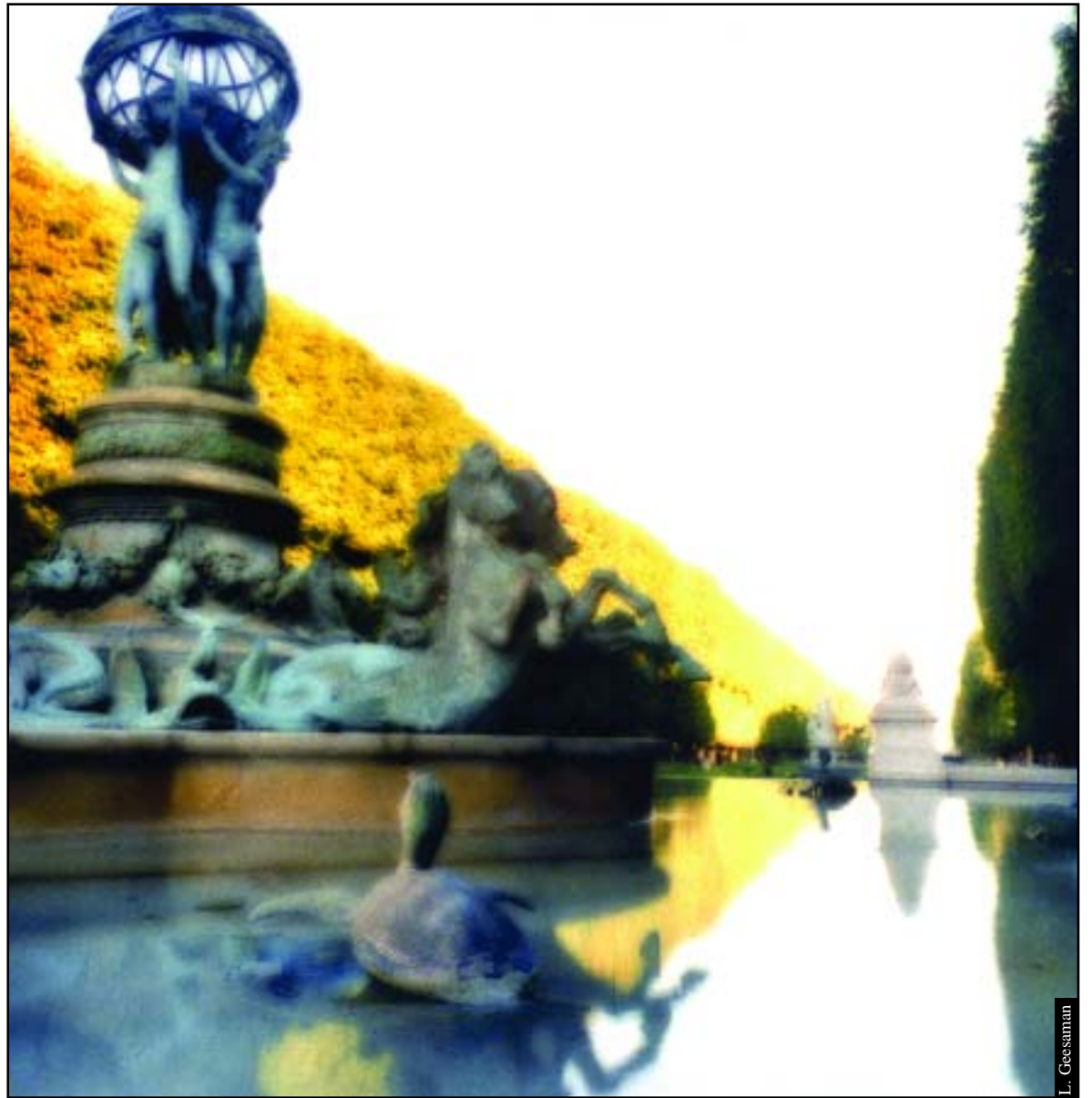
“My subjects are found in European gardens, parks, and arboreal landscapes, where nature is shaped and controlled by aesthetic intent,” Geesaman wrote in 1998. “I look for order, variously imposed, in marginally natural settings, for perspectives concealed within the obvious design... My interest lies in a transformative process which uses photography to idealize rather than to document.”

“Geesaman’s photographs of purposively transformed places reminds all of us that the landscape we live in is a chosen one,” professor and gallery director, **Morgan T. Paine**, said. “Her photographs testify to our vast capabilities to shape and modify our environment. They make us recognize that the natural places of our world continue to exist only by our leave. The images raise some powerful and important questions; the fact that the prints are also beautiful merely adds to their wonder.”

For the last 18 years, Geesaman regularly exhibited her work at the Thomas Barry Fine Arts Gallery in Minneapolis as well as nationally and internationally. She was born in 1938 in Cleveland and earned a degree in physics from Wellesley College. In the late 1970s, she studied photography at Lightworks Photographic Workshops. Her soft-focus, sepia-toned images of formal gardens and serene landscapes often recall late 19th century pictorialist photographs.

Other upcoming exhibits include the Spring Juried Student Show. The opening reception is 5 p.m. to 7 p.m. May 2 and the exhibit runs until May 13.

The Porter Goss 14th Congressional District Art Show is May 19 to May 24. Goss is expected to attend the opening reception from 2 p.m. to 4 p.m. May 19. ▀



Geesaman’s exhibit includes black-and-white and color images typically 19-inches square, such as “Luxembourg Gardens,” a color C-print taken in 1997 in Paris. Her photos show a particular type of altered landscape meant to delight and engage the viewer.

Professor, students coach local children to state competition

For some of the students at San Carlos Park Elementary School, April means a lot of extra work. Both of the school’s “Odyssey of the Mind” teams recently won third place regionally in their divisions and now the students will compete at the state level on April 13 in Orlando.

“Odyssey of the Mind is a voluntary program in which students are given a long-term problem to solve and perform for competition, as well as a spontaneous problem the day of competition,” said **Amy Oxendine**, communication major from Fort Myers and a team coach for three years.

Professor of communication **Maria Roca** began coaching kindergarteners and first graders in 1997 when FGCU opened. Now the coaching squad works with a talented third and fourth grade team in Division I. “In recent years I got FGCU students involved with me because I thought the Odyssey of the Mind program offered some exciting opportunities for them for service.”

Jamie Withrow, communication senior from Lehigh, brings theater experience to the coaching squad. While the service learning hours are an excellent benefit, Withrow says nothing replaces the excitement of seeing the girls come up with their own creative ideas and actually complete the problem.

“As I watched them perform in front of their school and at regional competition, I made a remark to Amy and Dr. Roca that I felt like a nervous mother.”

Members of the team chose “Classics...Center Stage,” a story from a designated problem list that the

team must make into an eight-minute play. The competitors follow guidelines, such as having a host to introduce the play, a 30-second dance, a scene change and including another character from a different work on the designated list.

“The most unique thing about Odyssey of the Mind is that the team members do everything by themselves. This includes coming up with the ideas for the play, determining who will play which parts, writing the script, making the entire set, making their costumes, and even simple things like putting on their own make-up when needed or fixing their own hair,” Oxendine said.

“The girls were full of ideas and determination to make it to the state competition. They worked as a team, even though sometimes it was rough, and put together a performance that included each team member’s ideas. It has been fun to watch their ideas grow and mature each year.”

Even with the service learning hours they earn, Roca says the two student coaches had no idea just how many hours of hard work the program would require of them.

Withrow sees something other than hard work. “The greatest experience is when we walk into San Carlos Park Elementary and those girls’ faces light up as they tell stories about their day. Or when a couple of them have a fight, we are able to solve it and move on. It’s kind of like being a big sister to these girls for a couple hours of the day and it was worthwhile to see the joy on their faces as all their work paid off and they were moving on to state.” ▀

Center for Positive Aging teaches people, animals how to be ‘Pet Partners’

The Southwest Florida Center for Positive Aging offered a Delta Society Pet Partners Course on March 8 for pet owners to learn how to help others in Southwest Florida.

Pet owners receive training, and later pass an evaluation with their pets, to become a Delta Society Certified Pet Partners team. As volunteer team, the owner and pet visit hospitalized children, ill or lonely adults, and work with people in rehabilitation. Locally, the teams become part of the Gulf Coast Pet Partners network.

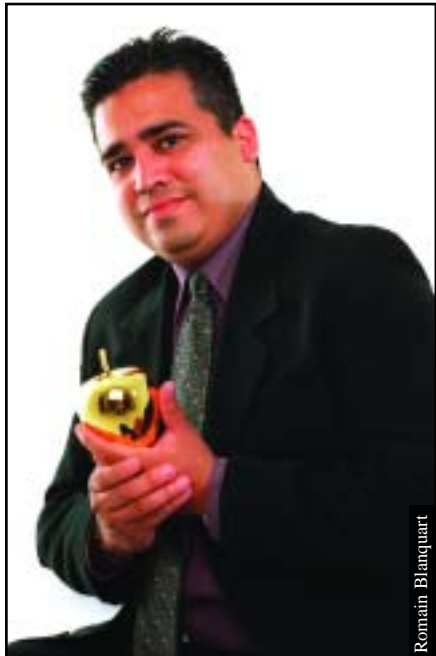
Established in 1990, over 4,000 Pet Partners teams now operate in 45 states and four countries, helping more than 350,000 people each year. Delta Society is the leading international resource for the human-animal bond and has been the force that validates the important role of animals for people’s health and well-being by promoting the results of research to the media and health and human services organizations.

Center director **Linda L. Buettner** is a licensed Delta Society trainer and conducts the course and evaluations. ▀

Stars emerge among FGCU alumni

The FGCU alumni ranks have topped over 1,800 in just four short years. As the number increases, shining stars emerge making their alma mater very proud of their accomplishments. Two such stars have emerged recently.

Pete Cade is a 2002 Golden Apple Teacher in Collier County. The award signifies “excellence in the classroom.” Of 1,000 teachers nominated, 190 applied and Cade was among the six selected. A 1999 graduate from the College of Education, Cade won this prestigious honor after only three years of teaching.



Pete Cade

Cade is a first grade teacher at the Redlands Christian Migrant Association (RCMA) Charter School in Immokalee where he grew up. In addition to his teaching, Cade directs the After-School Program which provides academic support and cultural enhancement for RCMA students. Of the Golden Apple Award, Cade says he was surprised and most excited to receive the honor after such a short time in teaching. “I have always wanted to work with children, to mentor them and build them up so that they can be productive,” he says. When asked what accounts for his success, Cade attributes it to his education at FGCU. “I feel that I was extra prepared. There was no question about what I needed to do, what I had to do. The University is turning out many great teachers. I feel fortunate to have gone through their program.” Currently, Cade is pursuing

a graduate degree in education leadership at FGCU. He wants to become a school administrator positioned to help even more children.

Wendy Berg is a 2002 recipient of the coveted “Clinical Excellence Award” presented by the Florida Nurses Association in March. Nominated for this award by FGCU director of Nursing **Carol Davis**, Berg earned her BSN from the



Wendy Berg

Photographs Courtesy of Naples Daily News

School of Nursing in the College of Health Professions in May 2001. A labor and delivery nurse at NCH’s North Collier Hospital, Berg demonstrates daily her dedication to nursing and special concern for her patients. She was selected for this award on the basis of her compelling essay on how she has made a difference in a patient’s life. As part of the award, Berg was invited to read her paper at the Florida Conference of Clinical Excellence in Orlando. Berg says the award “means a lot to me because it recognizes nurses for what they do every day including saving lives.”

If you are an FGCU alumnus with noteworthy achievements, please let us hear from you. We want to capture and publish your good news. Email us at communityrelations@fgcu.edu or call us at (941) 590-1081.

University recognizes five-year employees

President **William C. Merwin** hosted a celebratory breakfast on April 8 in the Sprint Room of Whitaker Hall to honor 63 FGCU staffers who have completed five years of service to the University. The honorees represent 18 different departments across the University.

In his remarks to the honorees, President Merwin said, “You have seen many different changes. You came when there were no buildings, no students, no library; now look at what you have built. We are close to 5,000 students; we now have 30 buildings on a campus that’s five years old; and we have a thriving athletic program with wonderful student athletes.

“Recognizing that we are the engine of cultural transformation, my vision for FGCU is this: we have now become the school of choice for Lee and Collier counties and soon will be for Charlotte county. We will grow our own workforce and provide a well-prepared workforce for this high tech economy; we will provide better policemen, public administrators, teachers and health care workers. We will become the cultural harbor of Southwest Florida. We will transform the culture of Southwest Florida through you. You have my gratitude for your fine work in building this institution.”

President Merwin asked the honorees to share with the audience of approximately 150 colleagues what it was like to become an employee of FGCU five years ago. Impromptu comments ranged from the physical plant to working relationships.

Dusty (with all the construction going on) It looked like a swamp with animals and critters running around the place
The College of Education had students (transferring from the USF Branch campus) and were working with them while trying to transition into the new facility out here
Treeline Boulevard was a dirt road that did not allow easy access to the campus. I gave up and turned around without ever seeing the campus before I was hired.
My first job was serving on search committees

It was great to be a part of a small group where everyone got introduced around and knew everyone. It was like family.

Mosquito control gave helicopter rides to employees who wanted to see the campus from the air. The aerial view was fascinating.

We sometimes lose sight of the fine group of support staff we have always had. They and administrators

were hired first and support staff did the important job of helping to hire faculty.

Madeline Rebar, associate director of human resources, organized the event. Each honoree received the coveted eagle-shaped green and blue lapel pin.

FGCU Five-Year Employees:

Administrative Computing

Brenda Bartlett
Keith Bullock
Lorinda Hinkle
Charles Weaver

Administrative Services

James Fritz

Campus Police and Safety

Herbert Caudle
Robert Harris

College of Arts & Sciences

Edwin Everham III
John Fitch
Donna Henry
Dewie Robinson
Valerie Smith
Susan Stans

College of Business

Rosemary Meza
John Murray
Dan Regelski
Walter Rodriguez
Arthur Rubens

College of Education

Leticia Ancheta
Cecil Carter
Brenda Lazarus
Cynthia Lott
Sharon Pfa

College of Health Professions

Sharon Bevins
Thomas Bevins
Joan Glacken
Margaret Gray-Vickrey
Lynn O’Hare
Regina Payne
Jo Wilson

College of Professional Studies

Cheryl Brown
Gary Lounsberry
Johnny McGaha
Pamella Seay
Patricia Washington

Enrollment Services

Athena Lathrop
Dolores Young
Michele Yovanovich

Facilities Planning & Management

Alice Gerlach

Finance & Accounting

Maryan Egan
Lisa DeJesus
Susan Phillips

Instructional Technology & Broadcast Services

Gene Craven
Iris Gerstle
Jose Madera-Fernandez

Library Services

Georgia Allen
Anjana Bhatt
Evelyn Fedor
Gail Fredericks
Linda Golian
Pamela Sawallis

Office of the President

Linda Ciprich
Mary Reed

Plant Operations & Maintenance

Michael Constantine
Ada Dunwody
James Hehl
Philip Niarchos
Chris Wiley

Office of Research & Sponsored Programs

Kathleen Casey

Service Learning

Lisa Paige-Joe

Student Affairs

Jon Brunner
Elaine Hozdik
Diane Shoemaker

Service Learning in the Dominican Republic for Spanish Club students, faculty

Nine students from the FGCU Spanish Club found an alternative to water sports, sun tanning and nightlife for Spring Break. The students chose to spend the week in the Dominican Republic painting and repairing houses in La Otra Banda, one of the poorest neighborhoods of Santiago.

Led by assistant professor of Spanish and German, **Ingrid Martinez-Rico**, and academic adviser and adjunct faculty in the College of Arts and Sciences, **Craig Heller**, students earned service learning credits while learning more about Dominican culture. The group assisted in the repair of two homes and cleaned and painted the two-room elementary schoolhouse that serves the children of La Otra Banda.

The students said it was a valuable experience. They were able to lend their labors to the crucial work of building safe housing for the poor of Santiago and get first-hand experience working in a developing nation.

The interaction between FGCU students, faculty, Dominican Republic citizens, and members of the Dominican community in Fort Myers who assisted in preparations for the trip, contributed significantly to the educational mission of FGCU by expanding participants' horizons.

To finance the trip, as well as provide the materials necessary for these projects, students held a number of campus events including the sale of Hispanic food prepared by students, a raffle and several car washes. The FGCU Foundation, the College of Arts and Sciences, and the Student Government Association generously supported the project as well.

The journey was also the second service learning trip with the Spanish Club for several of the students. Preparations are already underway for next year's project.

For more information on how to help and participate,



From bottom left: Diana Fermín, Cristina Chávez, Victor Heller-Martínez, Danielle Koepke, Josh Foley, Ingrid Martínez-Rico, Bianny Fernández, Victor Tejera, Kim Cahill, Blanca Fernández, Zach Gaither and the director and assistant director of the Fundación Educativa Acción Callejera of Santiago, one of the places where FGCU students traveled to donate school materials and other needed goods.

contact Martinez-Rico at imrico@fgcu.edu.

The Spanish Club is active in expanding the appreciation and understanding of Hispanic cultures in Southwest Florida and encourages everyone to participate. *¡Bienvenidos!* ▣

Dr. Ingrid Martinez-Rico, who is originally from Spain, is an assistant professor of Spanish and German in the College of Arts and Sciences. During spring break each year, she leads a group of students on a service learning project to the Dominican Republic.

Collier residents attend opening of FGCU Naples Center

The FGCU Naples Center invited the public to learn about upcoming courses in the Renaissance Academy's spring program and tour the newly renovated Heart Fax Building during an opening reception, March 24.

Course leaders presented the spring program, starting on April 22 and continuing into June, which has an exciting curriculum that includes discussion groups, lectures and roundtables.

The ground floor of the Heart Fax Building, located at 1010 Fifth Ave. S. on the corner of 10th Street, was renovated to accommodate the Naples Center. An anonymous donation valued at over \$500,000 made the changes possible. The Renaissance Academy's spring program will mark the first classes offered in the building and FGCU plans for three of its colleges – Business, Health Professions and Professional Studies – to also utilize the space.

FGCU created the Renaissance Academy on the premise that learning should never stop and that keeping the mind intellectually, creatively and culturally active enhances the quality of life. ▣



At the Renaissance Academy open house event Dean of Graduate Studies and Continual Learning **Jack Crocker** shows off the newly renovated FGCU Naples Center. Over 100 Renaissance Academy members and prospective members attended the event.

Symposium and seminar focus on forensics, crime scene technology

The community of Southwest Florida participated in the Second Annual Forensic Symposium on Feb. 20 and a pre-event crime scene technology seminar on Feb. 18 and 19.

The Forensic Symposium began with a workshop to provide knowledge about sexual assault crime scene investigation and victim examination. In the afternoon, presenters simulated a crime scene. The subsequent investigation involved forensic investigators, psychologists, anthropologists and medical examiners.

The symposium was approved for Continuing Education Credits for nursing, clinical laboratory and Florida Bar professionals. It was presented as a joint effort of the FGCU Division of Legal Studies, College of Health Professions and Lambda Alpha Epsilon.

"Advances in Crime Scene Technology" was a two-day, pre-event seminar that has been presented to many criminal investigators, from police chiefs to FBI Evidence Recovery Units, by Forensic Consultants and Directors of DOJES Inc. The seminar is designed for experienced investigators, technicians and other specialists in criminal investigations, including those who are new to evidence development. ▣



"Reflections of the World" International Celebration

Students were treated to a Polynesian fire show and traditional barbecue at the residence halls tiki hut as part of the International Celebration "Reflections of the World" on March 27. The four-day program emphasized presentations, performances, food and art in ways to learn about different cultures and experiences. The FGCU International Club; Hispanic Students for Higher Education; Multicultural Student Association; Student Government Association; and the Offices of International Services and Student Life, Student Life, and Housing and Residence Life co-sponsored the event.

Professional Briefs

Dr. Jose Barreto, College of Arts and Sciences, received a \$225 grant from Florida Sea Grant College to fund a project titled "The Discovery and Development of Therapeutic Agents from Marine Invertebrates."

Dr. Sharon Bevins, assistant professor in the division of health sciences in the College of Health Professions, is president elect of Southwest Florida Healthcare Executives. She presented "Utilizing a PBL/Case Study Approach to Incorporate Women's Health Issues into a Graduate Level PT Curriculum" at the APTA National Combined Sections Meeting in Boston in February.

FGCU's business librarian **Anjana Bhatt** created an "Education Web" (www.lee.k12.fl.us/schools/fmh/ed_web/) for Fort Myers High School. The website features educational resources, homework and research paper help, sites to help prepare for college and find sources of financial aid, and job related sites and information.

Anjana Bhatt along with **Kitti Canepi**, resource management librarian, and Georgia Allen, systems coordinator, presented a session titled "Dynamic Web Pathfinders: Subject Librarian Empowerment" at the Information Strategies 2001 National Conference in Fort Myers.



Anjana Bhatt

Dr. Linda Buettner, College of Health Professions, received a \$50,000 grant from the Area Agency on Aging for Southwest Florida to produce a *Caregiver Resource Manual*.

Dr. Linda Golian, reference team leader and education librarian, and **Rebecca Donlan**, technical services team leader, attended the ACRL/Harvard Leadership Institute in August 2001. They wrote about their experience in "Highlights from the Third Annual ACRL/Harvard Leadership Institute," *C&RL News*, Vol. 62, no. 11 (December 2001). **Dr. Golian** presented "Florida Gulf Coast University's Synchronized Solutions: Librarians and Educators Collaborating to Create Effective Learners Among College Freshmen," at the Information Strategies 2001 National Conference. She also conducted a training session titled "Utilizing Thinking Style Preferences and Other Helpful Tips for Effective Library Communication and Management," for SWFLN in Fort Myers on March 28, 2002.

Dr. Marci Greene, College of Education, received a \$4,000 grant from the University of Florida to fund Project Rejuvenation 2001-2002.

Dr. Greene, **Dr. Sally Mayberry** and **Dr. Dennis Pataniczek**, College of Education, had their manuscript "Living in a Tenure/contract Environment: Voices from Within" published in the spring issue of *Florida Educational Leadership*.

Dr. Kay Halverson, director, Family Resource Center, College of Education, will join two Australian colleagues to present on Infants and Toddlers at the World Forum on Early Care and Education in Auckland, New Zealand, April 12, 2002.

Julie Hammerling, instructor, Department of EHMCS, College of Health Professions and **Dr. Linda Martin**, Department of Occupational Therapy, College of Health Professions, served as judges at the Edison Regional Science Fair in February 2002.

At the Information Strategies 2001 National Conference, associate librarian **Mary Kay Hartung** presented a session titled "Peer Teaching as a Model for Faculty Seminars on Library Resources." She described how librarians can help faculty stay abreast of rapidly evolving information resources.

Dr. Donna Henry, associate dean, College of Arts and Sciences, and **Dr. Sally Mayberry**, professor, College of Education, made a presentation titled "An Ecological Kaleidoscope" at the National Science Teachers Association conference in San Diego in March 2002.

Lynda Jack, assistant professor, department of physical therapy, College of Health Professions, presented a poster titled "Skills Self-Inventory Using Guide to Physical Therapist Practice" at APTA Combined Sections Meeting in Boston, February 2002.

Dr. Gary Lounsberry, social work division, College of Professional Studies, received a \$25,000 addition to his existing Florida Department of Children and Families contract to analyze Homeless Management information Systems and track former residents of G. Pierce Wood State Hospital among the region's homeless population.



Michael P. Lucas

Michael P. Lucas, geoscientist, College of Arts and Sciences, presented his research titled "Magnitude and Timing of Terrestrial Bolide Impacts: Implications for Mass Extinction Severity During the Mesozoic and Cenozoic" at a joint meeting of the North-Central and Southeastern Sections of the Geological Society of America in Lexington, Kentucky on April 3-5, 2002.

Dean Johnny McGaha, College of Professional Studies, received a \$17,893 grant from the Florida Department of Children and Families to operate the Single Point of Access Referral Service for Youth Drug Abusers and Troubled Teens.

College of Health Professions **Dean Cecilia Rokusek** received a \$24,576 grant from the Lee Physician Group to fund Nutrition Consulting. **Rokusek** and Health Education Center Director **Kathy Kleist** received an \$8,382 grant from Lee County Schools to promote good health through innovative teaching in the Kleist Health Education Center.

Linda Summers, service learning coordinator, received a \$9,228 grant from the Florida Office of Collegiate Volunteerism to fund the AmeriCorps VISTA position.

Dr. Michael Savarese, division of ecological studies in the College of Arts and Sciences, presented his research titled "Paleontology Taught in the Context of an Undergraduate Earth Systems and Environmental Sciences Curriculum," at a joint meeting of the North-Central and Southeastern Sections of the Geological Society of America in Lexington, Kentucky, April 3-5, 2002.

Corbett Torrence, adjunct professor, College of Arts and Sciences received the Dr. Frank C. Craighead Award from the Southwest Florida Archaeological Society. The award was given in recognition of Torrence's professional work including the development of an excellent and highly publicized archaeological field school.

Torrence and Theresa Schober, adjunct faculty, division of ecological studies, College of Arts and Sciences, received a \$40,000 grant from the town of Fort Myers Beach to fund the project Archaeology Assessment of the Estero Island Site (8LL4).

Dr. Jo Ann Wilson, associate professor, College of Health Professions, made three presentations at the 18th Annual American Society for Clinical Laboratory Science Clinical Laboratory Educators' Conference in Honolulu, Hawaii, February 26-28, 2002: "Intellectual Property: Perspective and Policies Across the Nation;" "Web-based Education: Do You Know Who Owns Your Internet-Based Course?" "Web-based Education Intellectual Property: Control, Conflict and Courseware."

Center director **Linda L. Buettner** is a licensed Delta Society trainer and conducts the course and evaluations.



Scholars' Club hosts financial series for teens

Bank of America's Jamie Halpin addresses teens during the Scholars' Club Personal Financial Management Series for high school students in February. The goals were to increase the knowledge and understanding of responsible use of money for teenagers. Speakers included representatives from AMSouth Bank, Germain Auto, Nationwide Insurance, the Florida Consumer Protection Agency and the FGCU College of Business. Scholars' Club is a program of the Public Schools Enrichment Partnership in the College of Education.



New associate library director joins FGCU

In March, FGCU hired **Daniel Liestman** as associate director of Library Services. Liestman comes from Kansas State University in Manhattan, Kan., where he was chair of Social Sciences and Humanities.

Fort Myers DAR chapter establishes endowed scholarship

The Caloosahatchee Chapter of the National Society of the Daughters of the American Revolution donated \$10,000 to the FGCU Foundation on Feb. 22 to establish an endowed scholarship for students who are American history majors.

"The Chapter decided five years ago to endow the scholarship," Chapter registrar Aileen Lackey said. "Sally Hughes, a past regent, and I began to develop it."

The goal of the DAR endowed scholarship is to support "nontraditional students who are American history majors in pursuit of degrees or those finalizing a degree in the subject of American history. Nontraditional students are defined as those who have been away from the academic environment for an extended period of time," according to the agreement.

"The scholarship is for an untraditional student returning for a degree in history," Lackey said.

Professor of history **Irvin Winsboro** worked many months on the proposal to the DAR chapter to establish the scholarship and attended the agreement signing. "I was there as the architect of the scholarship," he said.

"Scholarship funds such as the one the DAR is establishing give very real help to those for whom higher education might be out of reach. The most important aspect is that this endowed scholarship will be helping students forever," FGCU senior director of campaigns, **Linda Lehtomaa**, said.

President William C. Merwin and interim vice president for Advancement



President William C. Merwin, Martha H. Raugh, Tom Healy and Irvin Winsboro at the signing of the agreement to establish the Caloosahatchee Chapter DAR endowed scholarship. The chapter donated \$10,000 to the FGCU Foundation on Feb. 22.

Tom Healy signed the agreement establishing the scholarship, along with DAR regent for the State of Florida Martha H. Raugh.

The local chapter thinks the event was particularly important. Lackey said, "We are celebrating our 75th anniversary this year."

The DAR is dedicated to service to the nation. Objectives of the organization are historic preservation, promotion of education and patriotic endeavor. The Society was incorporated under the laws of the District of Columbia June 4, 1891, and in 1896, incorporated by an Act of the United States Congress. ▣

U.S. Fish and Wildlife Service presents volunteer award

The U.S. Fish and Wildlife Service presented its Southeastern Volunteer Directors' Award to FGCU Wings of Hope director **Ricky Pires** on March 5 for her work as chair of the Friends of the Florida Panther Refuge group.

National Wildlife Refuge Managers nominated 500 volunteers from 12 states for their extraordinary contributions to the goals and objectives of the refuges. The selection committee felt that Pires' contributions, dedication and enthusiasm made her the most deserving nominee.

"She has the enthusiasm and initiative of a one person army," manager of the Florida Panther Refuge, Jim Krakowski, said in his recommendation.

Also an FGCU alumna, Pires developed the Florida Panther Posse in over 50 elementary schools in five counties. In the last two years, Pires contributed over 2,700 volunteer hours and received accolades from state officials including Gov. Jeb Bush, Secretary of State Katherine Harris and Sen. Burt Saunders. ▣



Centex Rooney hosts "Topping Out Party" for subcontractors

Drying cement reflects indigo blue in the open courtyard of the Fine Arts Building while subcontractors complete work on planters and benches. Contractor Centex Rooney hosted a "Topping Out Party" on Jan. 25 for workers to signify that construction reached the milestone of completing the most vertical part of the building. The \$7.5 million building is a 30,000 square foot learning center that will house studios and classroom space for visual art, music, wood-working, a 2,000 square foot art gallery and faculty offices. The building will open this fall.



U.S. Fish and Wildlife regional director for the Southeast Region Sam Hamilton presents the Southeastern Volunteer Directors' Award to **Ricky Pires** on March 5 in New Orleans.

Research thrives at FGCU

Saltines and salty ones: oysters as indicators of environmental health – implications for restoration of Southwest Florida estuaries

In addition to teaching and community service, a university by its very definition conducts research. In the best tradition of comprehensive universities, FGCU continues this practice with much of the research directly addressing problems found in Southwest Florida.

Professors **Aswani Voley**, **Michael Savarese** and **Gregory Tolley** are conducting research on the restoration of Southwest Florida estuaries. This team of professors from the division of ecological studies in the College of Arts and Sciences are investigating how watershed alterations affect the health of oysters, their growth and distribution in Southwest Florida estuaries.



Aswani Voley investigates the health of an oyster reef in one of Southwest Florida's estuaries. Oyster reefs, in addition to filtering water, provide food and shelter to various aquatic organisms and reduce shoreline and mangrove island erosion.

Southwest Florida has witnessed tremendous growth in recent years. To accommodate this growth in population, resource managers have been forced to develop and manage watersheds, thereby compromising the habitat of aquatic organisms. Alterations in fresh water inflow, and overall watershed development, affect salinity (salt content) and water quality within Southwest Florida estuaries. Such variation in fresh water inflow affects the distribution of organisms within the system.

A management goal of watershed research is to "protect, enhance, and rehabilitate estuarine ecosystems." The research team is using responses of oysters, and organisms that live in and around them to set target water quality conditions for Southwest Florida estuaries. "Oysters are Valued Ecosystem Component (VEC) species; they sustain the ecological structure and function of dominant estuarine communities," said Voley.

The ecological importance of oyster reefs is under-appreciated, said Voley. Oyster reefs improve the water quality through biological filtration, protect against erosion and stabilize shorelines, provide nesting habitat, refuge and food source for numerous species of aquatic organisms including fish and wildlife (e.g., crabs, shrimp, fish such as blennies, gobies, killifishes, skillettfish; toadfishes and birds such as oyster catchers).

Oyster reefs provide area for attachment for benthic organisms: barnacles, sea squirts, anemones, sponges and corals. In short, oyster reefs are an ecosystem by themselves. Unlike fishes or crabs, oysters cannot pick up and move when water quality is not favorable. Therefore, any stress caused by the water quality is reflected in the health of the oysters, making them excellent candidates for linking environmental stress in a particular area and health of aquatic animals.

Historically, oyster reefs have been dominant components of the estuaries in Southwest Florida. Eastern oysters, *Crassostrea virginica*, are highly valued as food, but their ecological significance is even more important," says Voley. Oyster reefs improve water quality through biological filtration. Each oyster filters 4-37 liters (1-10 gallons) of water per hour, removing phytoplankton (algae), sediments, pollutants and micro-organisms from the water column reducing turbidity. This results in greater light penetration thus promoting the growth of sea grasses.

The team's research not only sets target water quality conditions for estuaries, but it also has tremendous implications for the future restoration of Florida Everglades since this involves diversion or alteration of water into Southwest Florida estuaries. During summer months when rainfall is heavy, salinity goes down providing more fresh water for the estuaries. During dry winter months, estuaries become marine. These conditions stress animals, especially oysters. Prior to this research, in anticipation of rainfall in summer months, the SWFWMD released freshwater from Lake Okeechobee in early summer months. Fresh water releases combined with heavy rainfall produce predominantly fresh water estuaries rather than the mix of fresh and salt water.

The research team recommended that fresh water be released during winter when there is little rain and salinities are high, thus maintaining an optimal salinity range for organisms in the estuary. The SFWMD is now releasing fresh water into the Caloosahatchee during the months with little rainfall. Based on the team's work, health of oyster reefs was adopted as a formal "performance measure" for monitoring estuarine restoration effectiveness for the "Comprehensive Everglades Restoration Plan", and to establish "minimum flows and levels" in the Suwannee and Caloosahatchee Rivers by Water Management Districts.

Drs. Voley, Savarese and Tolley, in collaboration with the City of Cape Coral, Lee County School District and Florida Sea Grant are initiating a community-based oyster-reef restoration program in the Caloosahatchee and Estero Rivers. ▣

Professor Aswani Voley is an assistant professor of Marine Science in the division of ecological studies, College of Arts and Sciences.

Holocaust survivor with education mission leads commemoration

Holocaust survivor and author Abe Price led the commemoration program "A Survivor Remembers" on March 7 with a candle lighting ceremony and presentation open to the public.

Price, a Naples resident, published his book *Memoirs of a Survivor* last year. He was 16 years old when Nazi soldiers invaded Poland in 1939, confiscated his family's shoe business in Kielce and began killing prominent people.

"My parents, brothers and sisters did not die – they were murdered in a gas chamber in Treblinka," Price told the *Federation Star* in 1996. "I lost 200 people of my family."

"I escaped in striped clothes, wooden shoes, with a shaved head and a number on my forearm. The second night of the death march, I escaped. I took a chance and lucked out."

After escaping, Price married and had a son, and with a few friends, fled through several countries until reaching America in May 1951.

"My parents, brothers and sisters did not die – they were murdered in a gas chamber in Treblinka, I lost 200 people of my family."

~Abe Price

"Lady Liberty had tears streaming down her face – she had reason to weep, a million reasons for all the oppressed 'huddled masses yearning to breathe free'."

"Normally, survivors should have given up on society and its selfishness. Yet, we have not given up. ...It is possible to invoke hope beyond despair. It is possible even to find a word of gratitude in our purified vocabulary."

"We express gratitude to this country, to the United States, for enabling so many survivors of the Holocaust to reconstruct broken lives in an atmosphere of kinship, trust, opportunity, and equality – express our gratitude to our children for giving us more than we have given them, for passing on our legacy and for seeking to remember what the world wishes to forget.

"My mission is Holocaust education."

FGCU, the Jewish Federation of Collier County, and the Jewish Federation of Lee and Charlotte Counties cosponsored the event. ▣



Faculty, students help judge Edison Regional Science Fair

Assistant dean and professor **Chuck Lindsey** joined 17 faculty members and 57 students as judges for the Edison Regional Science Fair and Young Inventors at Harborside Convention Center. The judges began at 7:30 a.m. and continued until noon. Professor of teacher education **Sally Mayberry** served as coordinator of the judges for the fifth year.

Sports roundup to date

F GCU athletic teams have enjoyed an extraordinarily successful season, positioning both men's and women's golf and tennis teams to play in the regional championship games this spring.

FGCU hosts the NAIA Region XIV tennis championship on April 11-13. Seven men's and seven women's teams will converge on the FGCU campus to compete for the championship. FGCU's men's tennis amassed an 11-4 record to rank them No. 14 in the NAIA poll. The women's tennis team, with a 14-6 record this season, is ranked No. 5 in the NAIA national poll. The regional winner will be invited to the national tournament on May 13-17 at the Peachtree City Tennis Center in

Georgia.

The men's and women's golf teams have had a phenomenally successful season. Ranked No. 1 and 2 respectively in the NAIA national poll, the teams are headed for the regional competition on April 15-16 at Oakwood Golf Club in Lake Wales, Fla. The men's national competition will be played on May 13-17 in Matanzas Woods in Palm Beach while the women's national is May 20-24 in Palm Coast, Fla.

To complete the story of scholar athletes, the members of these four teams have earned a distinguished record in academic performance as well. The teams have amassed an average grade point average of over 3.0 in their courses. ▣



Employees represent FGCU, win first place

Director of the University Counseling Center **Jon Brunner**, Purchasing Coordinator **Peter Boers** and health sciences instructor **Tony Burkett** won first place in the Men's Corporate Team division of the Edison Festival of Light 5K race on Feb. 16. Brunner quipped, "We are old but even ran faster this year!"

Alumni get discount on season tickets

A lumni of FGCU may purchase basketball season tickets at a special discounted price. A 20 percent discount on season tickets is available to alumni, their spouses and children. At this rate, alumni will enjoy the same level of discount as FGCU's faculty and staff.

FGCU's 2002-03 season tickets for men's and women's basketball went on sale to the general public on Monday, Feb. 11.

"Ticket sales have been brisk," athletic director, **Carl McAloose**, said. "To date \$36,000 worth of season tickets have been sold."

The season ticket package covers all home games, including an opening tournament at TECO Arena on Nov. 21 and 22, and the grand opening of FGCU's 4,500-seat Alico Arena on Wednesday, Dec. 2.

Alumni discounted season tickets range from \$50 for bleacher seats to \$150 for first row (Nicholson seats). Chairback and premium chairback seats are \$70 and \$85 respectively.

To order tickets, call Andy at (941) 590-7068 or Kathleen at (941) 590-7012. A seating chart is available online at: www.fgcu.edu/athletics. Click on Facilities. ▣

Upcoming Events at FGCU

April 2002

Continuing through Sunday, April 21

Lynn Geesaman Art Exhibit "Photos: Gardens/Landscapes"
FGCU Library Art Gallery
10 a.m. to 4 p.m., Mondays through Saturdays and 1 p.m. to 5 p.m., Sundays
Contact Morgan T. Paine at (941) 590-7164

Monday, April 22 through Monday, May 13

CLAST Workshop
Sponsored by Learning Resource Services
5 p.m. to 7 p.m., McTarnaghan Hall Rm 223
Contact LRS at (941) 590-7906

Tuesday, April 23

"Managing a Successful Budget" Workshop
Sponsored by Florida Institute of Government
9 a.m. to 4 p.m., Center for Professional Development at Edison Community College
Contact Joanne Hartke at (941) 590-7815

Wednesday, April 24

"Vacation Safety" Seminar
Sponsored by FGCU Campus Police and Safety
Noon to 1 p.m., Academic Building III Rm 116
Contact Sgt. David Lounsbury at (941) 590-1916

Wednesday, April 24

FGCU Regional Outlook Radio Show
WGCU-FM 90.1 and WMKO-FM 91.7
6:30 p.m.
Contact Audrea Anderson at (941) 590-1083

Thursday, April 25

"Life Balance...Stress and Time Management" Workshop
Sponsored by Florida Institute of Government
9 a.m. to 4 p.m., Center for Professional Development at Edison Community College
Contact Joanne Hartke at (941) 590-7815

Thursdays, April 25, May 2, 9, 16, 23

GMAT Math Review Course
Sponsored by the Testing and Assessment Office
6 p.m. to 8 p.m., McTarnaghan Hall Rm 204
Contact Testing and Assessment at (941) 590-7955

Friday, April 26

FGCU Research Day
Sponsored by FGCU Research and Sponsored Programs
1 p.m. to 5 p.m., FGCU Campus
Contact Tom Roberts at (941) 590-7021

Friday, April 26

FGCU Celebration of Excellence
Sponsored by FGCU Student Services
5 p.m., Whitaker Hall Sprint Room
Contact Joe Shepard at (941) 590-7900

May 2002

Wednesday and Thursday, May 1-2

"Girls Going Places" Entrepreneurship Conference
Sponsored by FGCU Small Business Development Center
8:45 a.m. to 5 p.m., Howard Hall Rm 111
Contact Dan Regelski at (941) 948-1820

Thursday, May 2 through Monday, May 13

Spring Juried Student Show
Opening Reception 5 p.m. to 7 p.m., May 2
FGCU Library Art Gallery
10 a.m. to 4 p.m., Mondays through Saturdays and 1 p.m. to 5 p.m., Sundays
Contact Morgan T. Paine at (941) 590-7164

Saturday, May 4

Spring Commencement Exercises
10 a.m., TECO Arena
Contact Marc Laviolette at (941) 590-7914

Monday, May 6

"Confrontation Management" Seminar
Sponsored by FGCU Campus Police and Safety
Noon to 1 p.m., Academic Building III Rm 116
Contact Sgt. David Lounsbury at (941) 590-1916

Thursday, May 9

"How to Meet in Half the Time" Workshop
Sponsored by Florida Institute of Government
9 a.m. to noon, Center for Professional Development at Edison Community College
Contact Joanne Hartke at (941) 590-7815

Sunday, May 19 through Friday, May 24

Porter Goss 14th Congressional District Art Show
Opening Reception 2p.m. to 4p.m., May 19
FGCU Library Art Gallery
10 a.m. to 4 p.m., Mondays through Saturdays and 1 p.m. to 5 p.m., Sundays
Contact Morgan T. Paine at (941) 590-7164

Wednesday, May 22

"Professional Telephone Skills" Workshop
Sponsored by Florida Institute of Government
9 a.m. to noon, Center for Professional Development at Edison Community College
Contact Joanne Hartke at (941) 590-7815

Thursday, May 23

"Negotiation and Mediation Skills" Workshop
Sponsored by Florida Institute of Government
9 a.m. to 4 p.m., Center for Professional Development at Edison Community College
Contact Joanne Hartke at (941) 590-7815

Wednesday, May 29

"Who Moved My Cheese?" Workshop
Sponsored by Florida Institute of Government
8:30 a.m. to 12:30 p.m., Center for Professional Development at Edison Community College
Contact Joanne Hartke at (941) 590-7815

Wednesday, May 29

FGCU Regional Outlook Radio Show
WGCU-FM 90.1 and WMKO-FM 91.7
6:30 p.m.
Contact Audrea Anderson at (941) 590-1083

June 2002

Saturdays, June 1, 8, 15

Miller Analogy Test (MAT) Prep Course
Sponsored by the Testing and Assessment Office
9 a.m. to noon, McTarnaghan Hall Rm 204
Contact Testing and Assessment at (941) 590-7955

Monday, June 3

"Hurricane Preparedness" Seminar
Sponsored by FGCU Campus Police and Safety
Noon to 1 p.m., Academic Building III Rm 116
Contact Sgt. David Lounsbury at (941) 590-1916

Wednesday, June 5

"Communication and Listening Skills" Workshop
Sponsored by Florida Institute of Government
9 a.m. to 4 p.m., Center for Professional Development at Edison Community College
Contact Joanne Hartke at (941) 590-7815

Thursday, June 6

FGCU Board of Trustees Meeting
8 a.m. to 6 p.m., Whitaker Hall Sprint Room
Contact Susan Evans at (941) 590-1057

Wednesday, June 12

"Customer Service Excellence" Workshop
Sponsored by Florida Institute of Government
9 a.m. to noon, Center for Professional Development at Edison Community College
Contact Joanne Hartke at (941) 590-7815

Wednesday, June 26

FGCU Regional Outlook Radio Show
WGCU-FM 90.1 and WMKO-FM 91.7
6:30 p.m.
Contact Audrea Anderson at (941) 590-1083

July 2002

Tuesday, July 23

"Office Safety" Seminar
Sponsored by FGCU Campus Police and Safety
Noon to 1 p.m., Academic Building III Rm 116
Contact Sgt. David Lounsbury at (941) 590-1916

Saturdays, July 27, Aug. 3, 10

Miller Analogy Test (MAT) Prep Course
Sponsored by the Testing and Assessment Office
9 a.m. to noon, McTarnaghan Hall Rm 204
Contact Testing and Assessment at (941) 590-7955

Wednesday, July 31

FGCU Regional Outlook Radio Show
WGCU-FM 90.1 and WMKO-FM 91.7
6:30 p.m.
Contact Audrea Anderson at (941) 590-1083

Athletic Events

Contact Kathleen Henrichsmeyer
(941) 590-7012

April 2002

Friday and Saturday, April 19-20

Men's Tennis NAIA Regionals
TBA

May 2002

Monday through Saturday, May 13-18

Men's Tennis NAIA National Championships
Atlanta, Ga.
TBA

Monday through Saturday, May 13-18

Women's Tennis NAIA National Championships
Peachtree, Ga.
TBA

Tuesday through Saturday, May 21-25

Women's Golf NAIA National Championships
Palm Coast Golf Resort, Palm Beach, Fla.
TBA