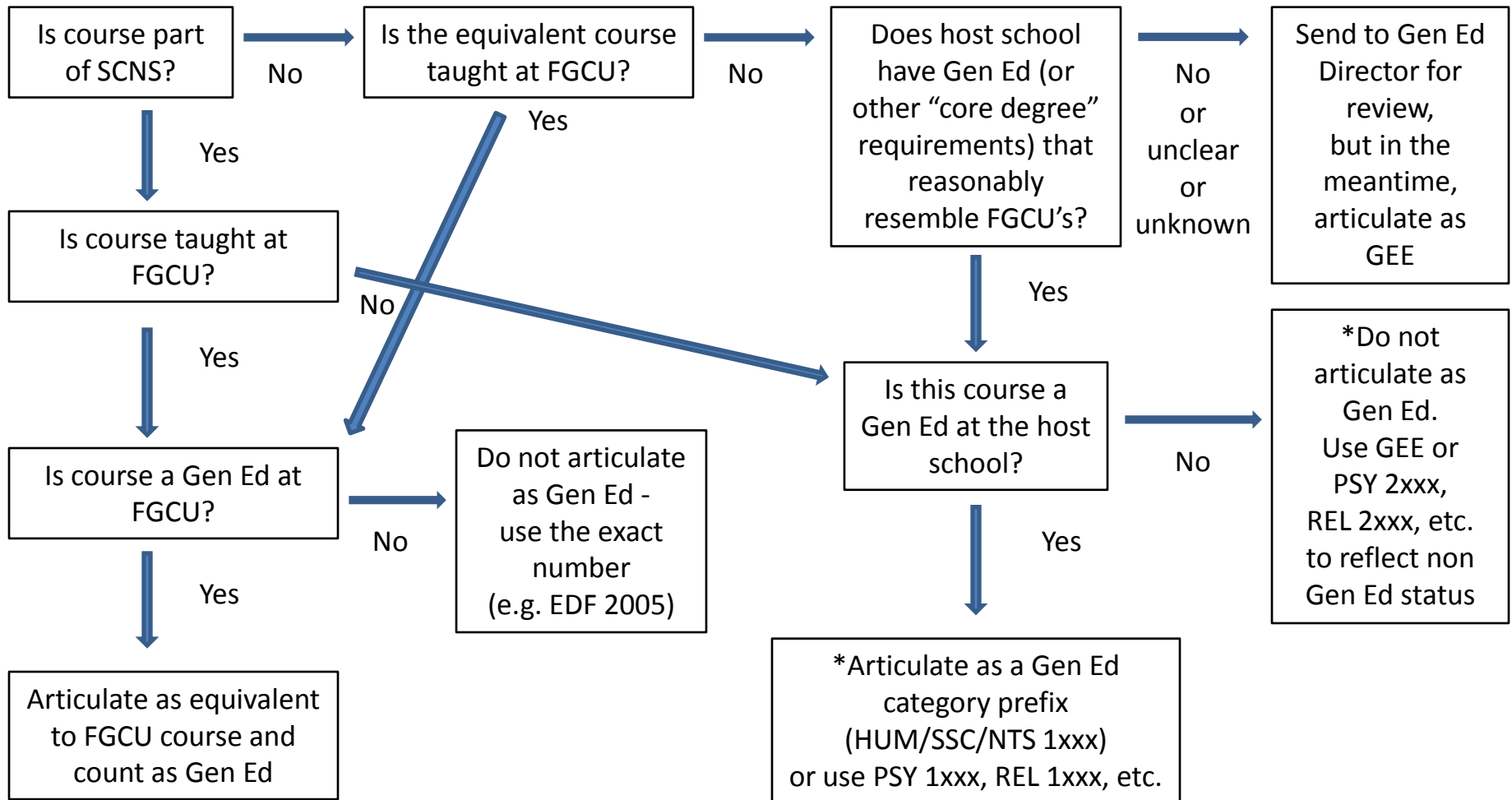


Articulation of Lower Level Courses



***History:** Previously, if a transfer lower-level course was not offered at FGCU, it was articulated as either Gen Ed (e.g. HUM 1xxx or 2xxx) or General Elective (GEE); however, since many specific Gen Ed classes also fulfill specific program requirements, we began to articulate with more specificity in order to facilitate CAPP compliances. For example instead of SSC 1xxx or 2xxx we began to use PSY 1xxx or 2xxx. No clear differentiation was made between the 1 or 2xxx levels.

NEW PROCEDURE: In order to clearly differentiate between lower level courses that are Gen Ed and those that are not, we will use 1xxx for courses that are clearly Gen Ed and also subject specific and 2xxx for courses that (according to the chart) are not Gen Ed but are still subject specific. (For example: REL 1xxx would denote the course is Gen Ed and also a lower-level religion course. REL 2xxx would denote that the course is not Gen Ed, but still can be used to fulfill requirements for lower level REL courses.) HUM 1xxx, SSC 1xxx and NTS 1xxx will continue to be used for courses that are clearly Gen Ed but do not require a specific subject coding. *Approved by Articulation Advising Committee 06/13/2008.*