

# WHAT IS WEBBOARD?

In this portion of the WebBoard tutorial, you will learn what WebBoard is and how it can be used in your classes. You should be able to name two types of activities for which WebBoard is used and to distinguish WebBoard from a web site.

[Back to Web Skills](#) | [Next](#) | [Back to Web Skills](#)

---

© FGCU 2000. This is an official FGCU Web page.

Florida Gulf Coast University is an equal opportunity/affirmative action institution.

10501 FGCU Blvd. South, Fort Myers, FL 33965-6565

[webmaster@fgcu.edu](mailto:webmaster@fgcu.edu)

Florida Gulf Coast University is accredited by the Commission on Colleges of the Southern Association of Colleges and Schools (1866 Southern Lane, Decatur, Georgia 30033-4097; Telephone number 404-679-4501) to award associate, baccalaureate, and master's degrees.

## What is WebBoard?

Web Board is an Internet conferencing tool that allows you to have discussions with your professor and classmates over the Internet. There are two types of discussions you can have.

1. You can exchange messages with others even though you are not all online at the same time. You can post or read messages at home, at work, in the computer lab, or elsewhere as long as the computer you're using is connected to the World Wide Web. Others can read these messages at their convenience. This is referred to as **asynchronous** communication.

[Previous](#)

| [Next](#)

| [Back to Web Skills](#)

---

© FGCU 2000. This is an official FGCU Web page.

Florida Gulf Coast University is an equal opportunity/affirmative action institution.

10501 FGCU Blvd. South, Fort Myers, FL 33965-6565

[webmaster@fgcu.edu](mailto:webmaster@fgcu.edu)

Florida Gulf Coast University is accredited by the Commission on Colleges of the Southern Association of Colleges and Schools (1866 Southern Lane, Decatur, Georgia 30033-4097: Telephone number 404-679-4501) to award associate, baccalaureate, and master's degrees.

## What is WebBoard? (cont.)

2. Web Board can also be used for online chatting, which requires that all parties to the chat be online simultaneously. The fact that all users must be online at the same time makes chat a type of **synchronous** communication.

[Previous](#)

| [Next](#)

| [Back to Web Skills](#)

---

© FGCU 2000. This is an official FGCU Web page.

Florida Gulf Coast University is an equal opportunity/affirmative action institution.  
10501 FGCU Blvd. South, Fort Myers, FL 33965-6565

[webmaster@fgcu.edu](mailto:webmaster@fgcu.edu)

Florida Gulf Coast University is accredited by the Commission on Colleges of the Southern Association of Colleges and Schools (1866 Southern Lane, Decatur, Georgia 30033-4097; Telephone number 404-679-4501) to award associate, baccalaureate, and master's degrees.

## What's the difference between a course WebBoard and a course web site?

The course **WebBoard** is different from the course **web site**. The **web site** is a compilation of web pages describing the course. The course syllabus, web links, assignments, weekly schedule, and other such pages may comprise the course web site. Not all courses have web sites, but many of them do.

The **WebBoard** is a commercial product which FGCU has acquired and installed for use as an Internet conferencing tool. Not all classes use WebBoard, but many of them do.

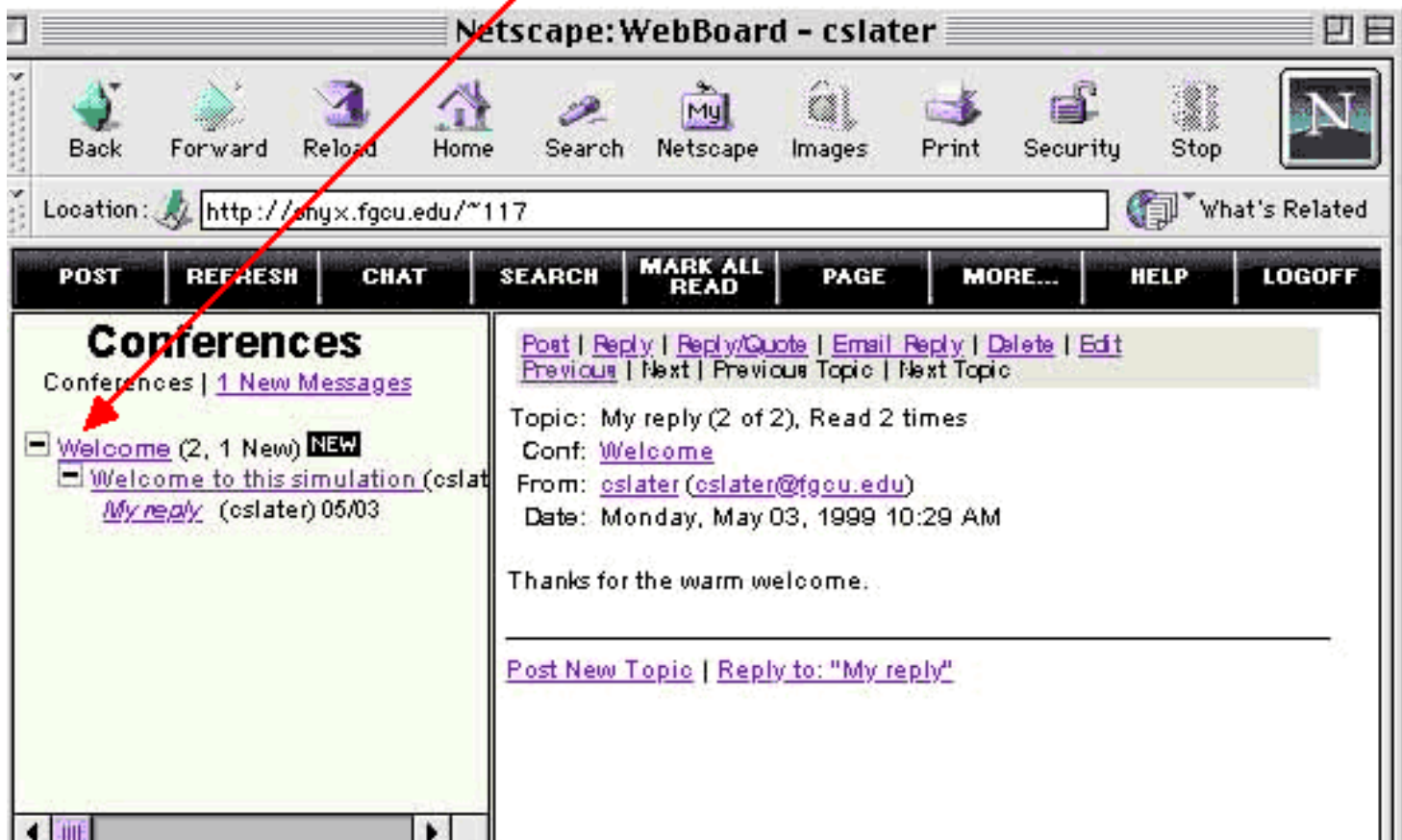
[Previous](#) | [Next](#) | [Back to Web Skills](#)

---

© FGCU 2000. This is an official FGCU Web page.  
Florida Gulf Coast University is an equal opportunity/affirmative action institution.  
10501 FGCU Blvd. South, Fort Myers, FL 33965-6565  
[webmaster@fgcu.edu](mailto:webmaster@fgcu.edu)

Florida Gulf Coast University is accredited by the Commission on Colleges of the Southern Association of Colleges and Schools (1866 Southern Lane, Decatur, Georgia 30033-4097; Telephone number 404-679-4501) to award associate, baccalaureate, and master's degrees.

Conferences are created by your instructor. Within the virtual space of a particular conference, your interactive discussions take place. Conferences may be organized by week (Week 1, Week 2, etc.), by topic (Painting, Sculpture, Photography), by module (Module 1, Module 2, etc.), or by any other organizational scheme chosen by your instructor. The **Welcome** conference is shown below.



**Conferences**  
Conferences | [1 New Messages](#)

- [Welcome](#) (2, 1 New) **NEW**
  - [Welcome to this simulation](#) (cslater) [My reply](#) (cslater) 05/03

[Post](#) | [Reply](#) | [Reply/Quote](#) | [Email Reply](#) | [Delete](#) | [Edit](#)  
[Previous](#) | [Next](#) | [Previous Topic](#) | [Next Topic](#)

Topic: My reply (2 of 2), Read 2 times  
 Conf: [Welcome](#)  
 From: [cslater \(cslater@fgcu.edu\)](#)  
 Date: Monday, May 03, 1999 10:29 AM

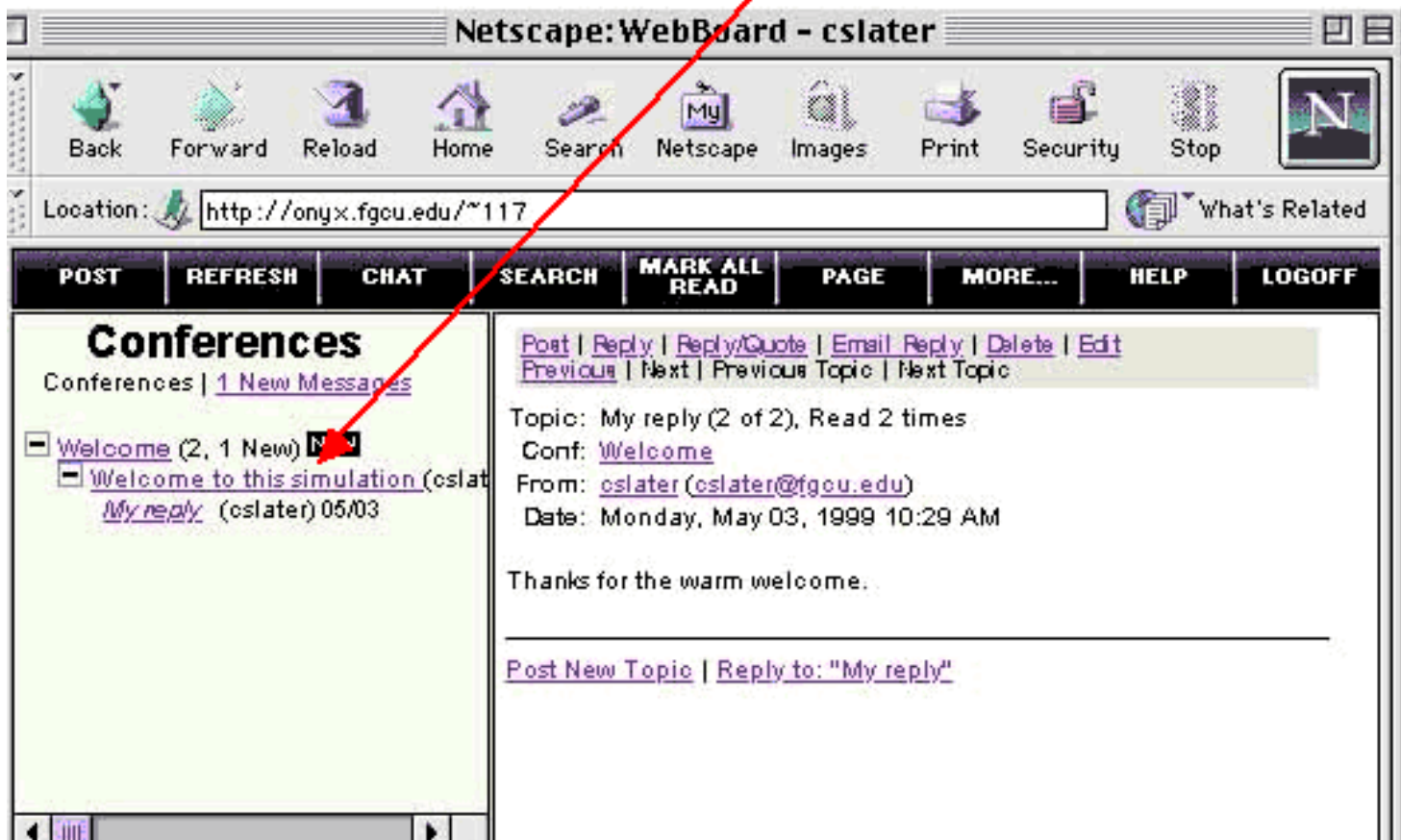
Thanks for the warm welcome.

---

[Post New Topic](#) | [Reply to: "My reply"](#)

[Previous](#) | [Next](#) | [Back to Web Skills](#)

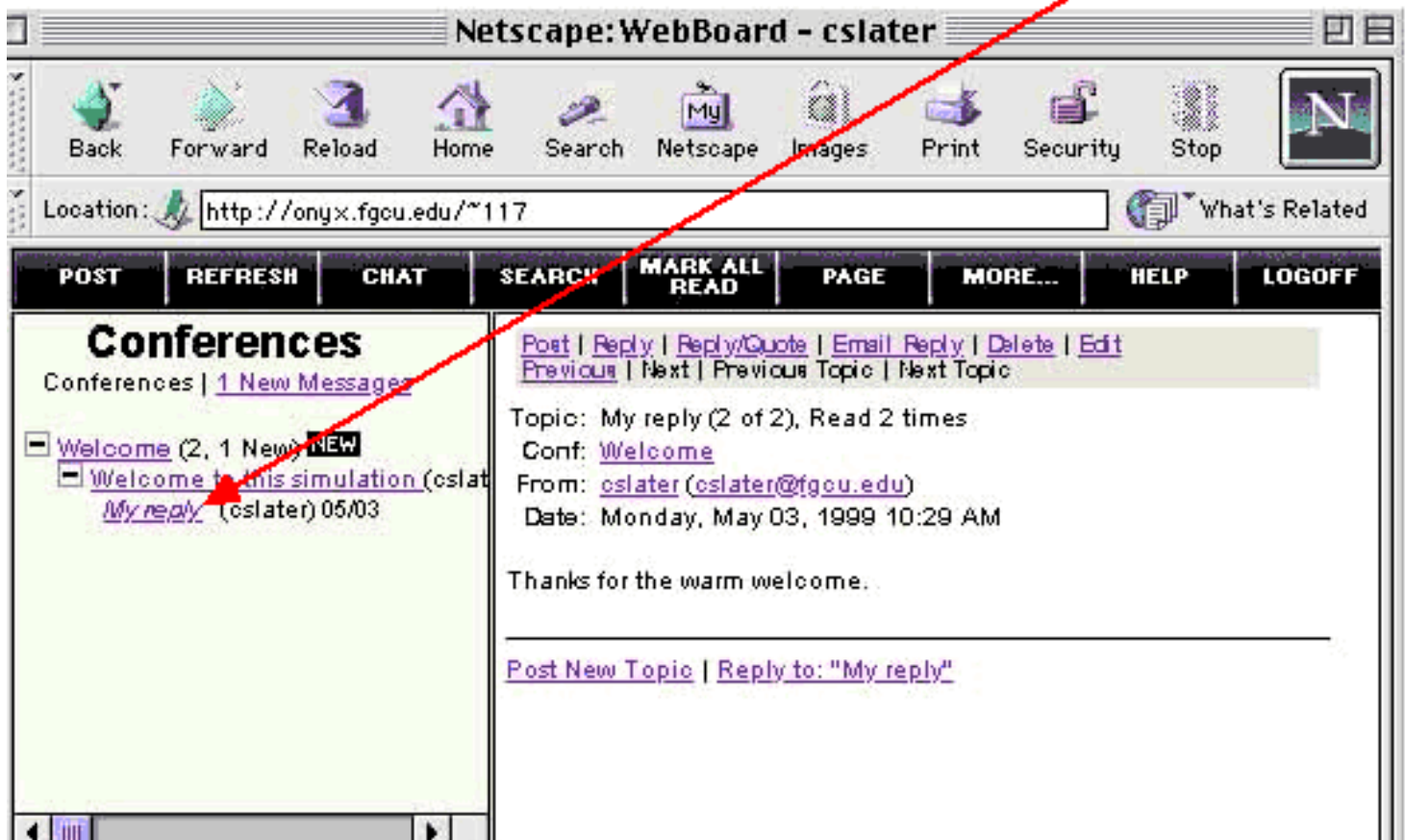
A **topic message**, commonly called a topic, is used when you are starting a new topic within a conference. Do not use a topic message when you are replying to someone else's message. Topics appear within conferences, below and slightly indented to the right of the conference name. In the example below, **Welcome to this simulation** is a topic message within the **Welcome** conference.



The screenshot shows a Netscape browser window titled "Netscape:WebBoard - cslater". The address bar shows "http://onyx.fgcu.edu/~117". The browser toolbar includes buttons for Back, Forward, Reload, Home, Search, Netscape, Images, Print, Security, and Stop. Below the toolbar is a navigation menu with buttons for POST, REFRESH, CHAT, SEARCH, MARK ALL READ, PAGE, MORE..., HELP, and LOGOFF. The main content area is divided into two sections. The left section, titled "Conferences", shows a list of conferences: "Welcome (2, 1 New)" and "Welcome to this simulation (cslater)". The "Welcome to this simulation" conference is expanded, showing a message titled "My reply (cslater) 05/03". A red arrow points from the text in the paragraph above to this message. The right section shows the details of the selected message, including navigation links (Post, Reply, Reply/Quote, Email Reply, Delete, Edit, Previous, Next, Previous Topic, Next Topic), the subject "Topic: My reply (2 of 2), Read 2 times", the conference "Conf: Welcome", the sender "From: cslater (cslater@fgcu.edu)", and the date "Date: Monday, May 03, 1999 10:29 AM". The message body contains the text "Thanks for the warm welcome." and a link "Post New Topic | Reply to: 'My reply'".

[Previous](#) | [Next](#) | [Back to Web Skills](#)

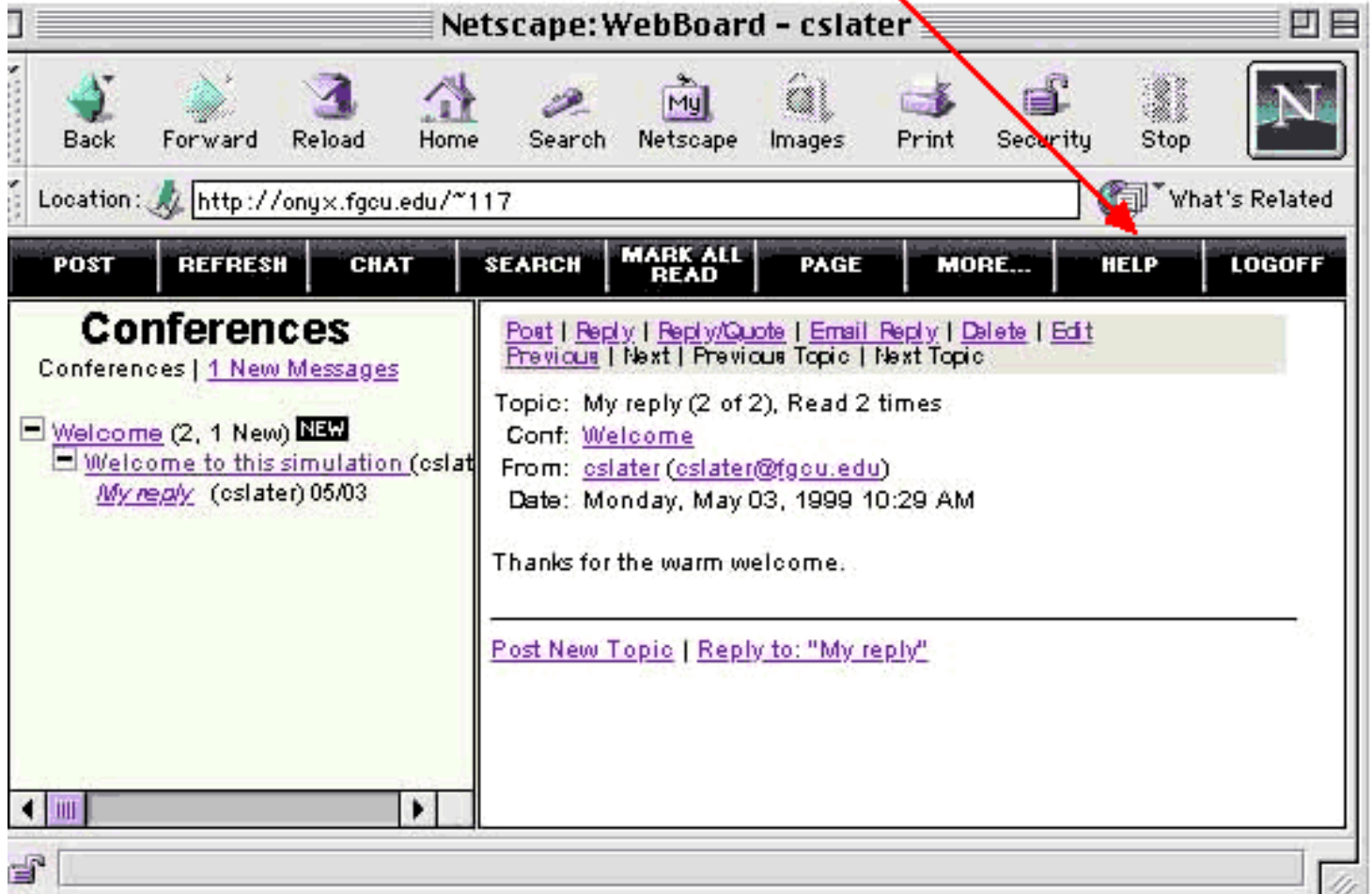
A **reply message** is used when you are replying to someone else's posting. **Reply messages** appear within conferences and topics, below and indented slightly to the right of the message to which you are replying. In the example below, **My reply** is a **reply message** to the topic message, **Welcome to this simulation**.



The screenshot shows a Netscape browser window titled "Netscape:WebBoard - cslater". The address bar shows "http://onyx.fgcu.edu/~117". The browser toolbar includes buttons for Back, Forward, Reload, Home, Search, Netscape, Images, Print, Security, and Stop. Below the toolbar is a navigation menu with buttons for POST, REFRESH, CHAT, SEARCH, MARK ALL READ, PAGE, MORE..., HELP, and LOGOFF. The main content area is divided into two panes. The left pane, titled "Conferences", shows a list of messages: "Welcome (2, 1 New)" with a "NEW" badge, and a sub-entry "Welcome to this simulation (cslater)" with a "My reply" link. A red arrow points from the "My reply" link to the right pane. The right pane displays the details of the reply message, including navigation links (Post, Reply, Reply/Quote, Email Reply, Delete, Edit, Previous, Next, Previous Topic, Next Topic), topic information (Topic: My reply (2 of 2), Read 2 times; Conf: Welcome), sender information (From: cslater (cslater@fgcu.edu); Date: Monday, May 03, 1999 10:29 AM), and the message body text "Thanks for the warm welcome." At the bottom of the right pane are links for "Post New Topic" and "Reply to: 'My reply'".

[Previous](#) | [Next](#) | [Back to Web Skills](#)

WebBoard has an excellent online help, which you are strongly encouraged to use.



[Previous](#) | [Next](#) | [Back to Web Skills](#)

# END OF WHAT IS WEBBOARD?

Before you use WebBoard, you must log in to it. Please press the **Next** button below to go to the **Logging In tutorial**.

[Previous](#)

| [Go to the Logging On Tutorial](#)

| [Back to Web Skills](#)

---

© FGCU 2000. This is an official FGCU Web page.

Florida Gulf Coast University is an equal opportunity/affirmative action institution.  
10501 FGCU Blvd. South, Fort Myers, FL 33965-6565

[webmaster@fgcu.edu](mailto:webmaster@fgcu.edu)

Florida Gulf Coast University is accredited by the Commission on Colleges of the Southern Association of Colleges and Schools (1866 Southern Lane, Decatur, Georgia 30033-4097; Telephone number 404-679-4501) to award associate, baccalaureate, and master's degrees.