

# Epifluorescence Microscope

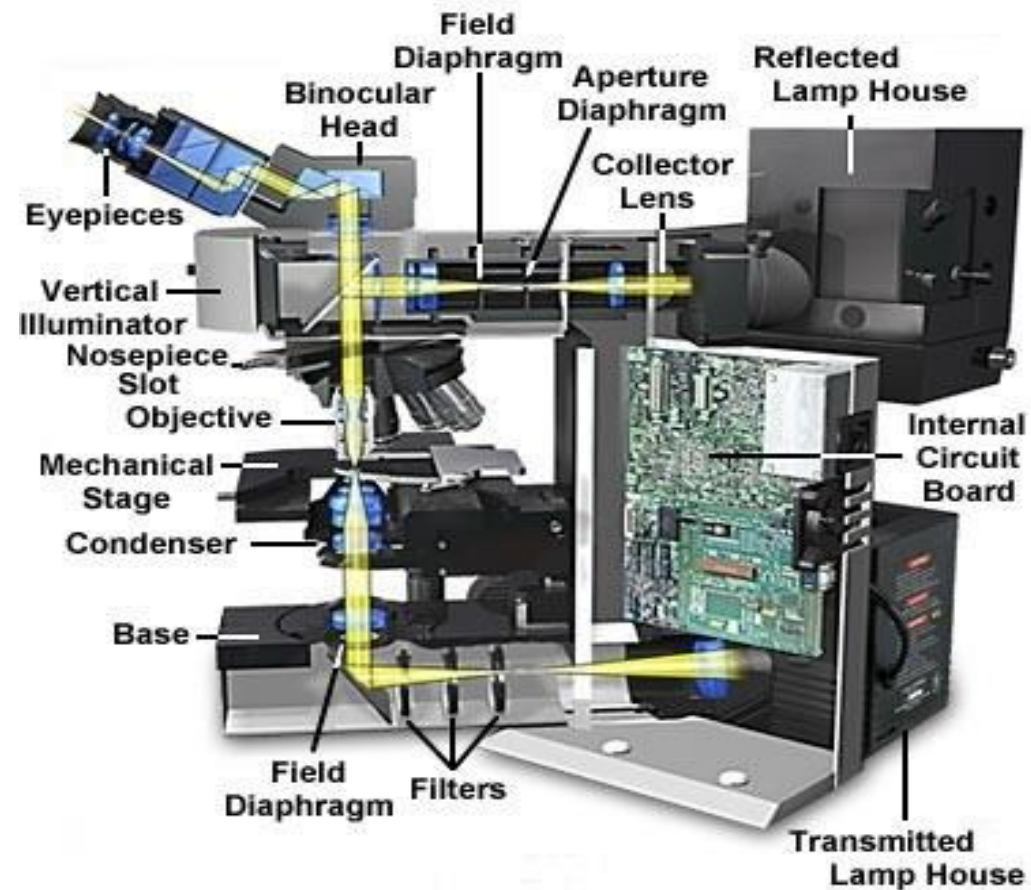
Huan Luong

Emergent Technologies Institute

# Transmitted Microscope



# Transmitted and Reflected Microscope



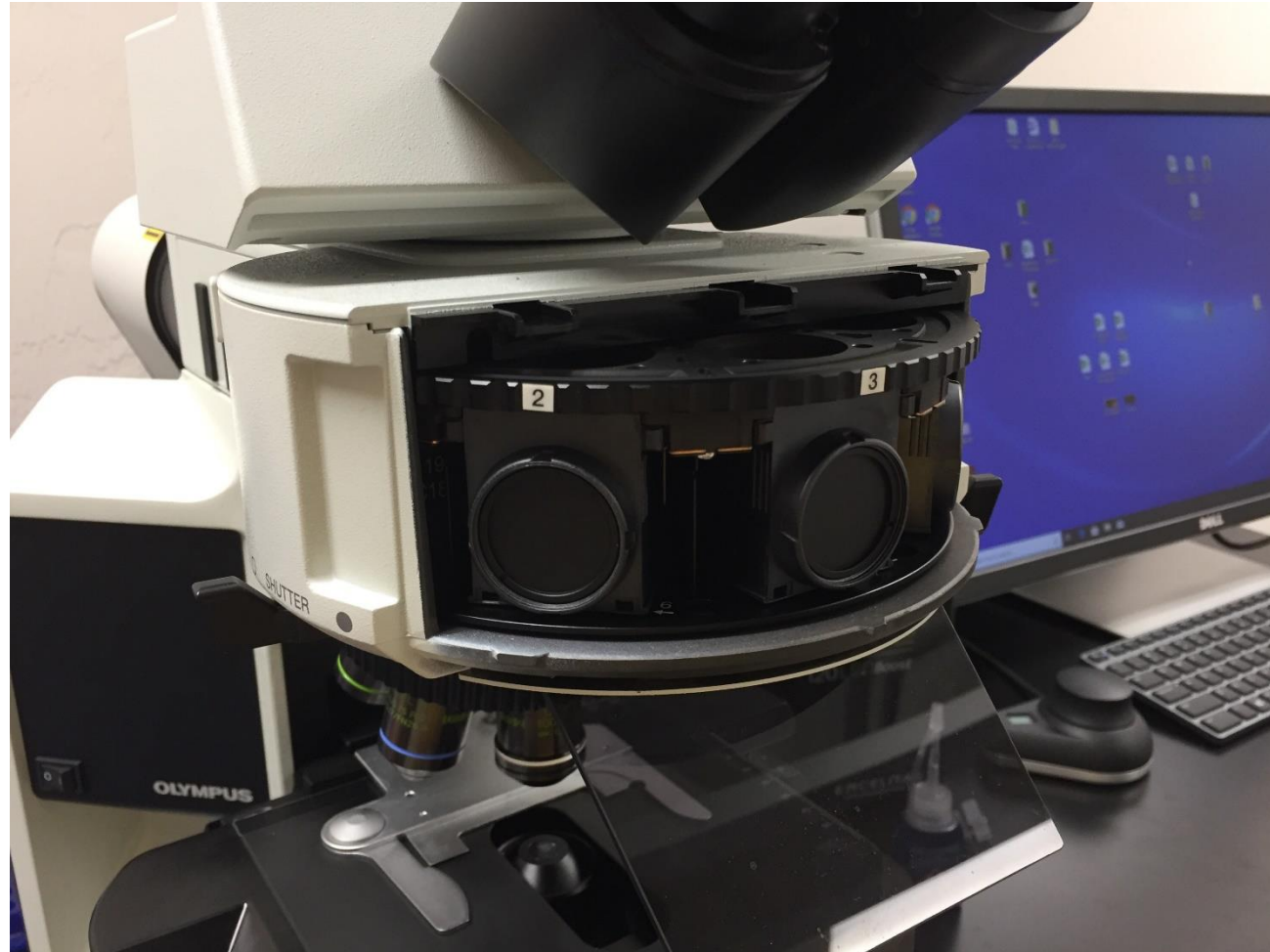
# Fluorescence Microscope



# Filter Cubes Location



# Filter Cubes Arrangement

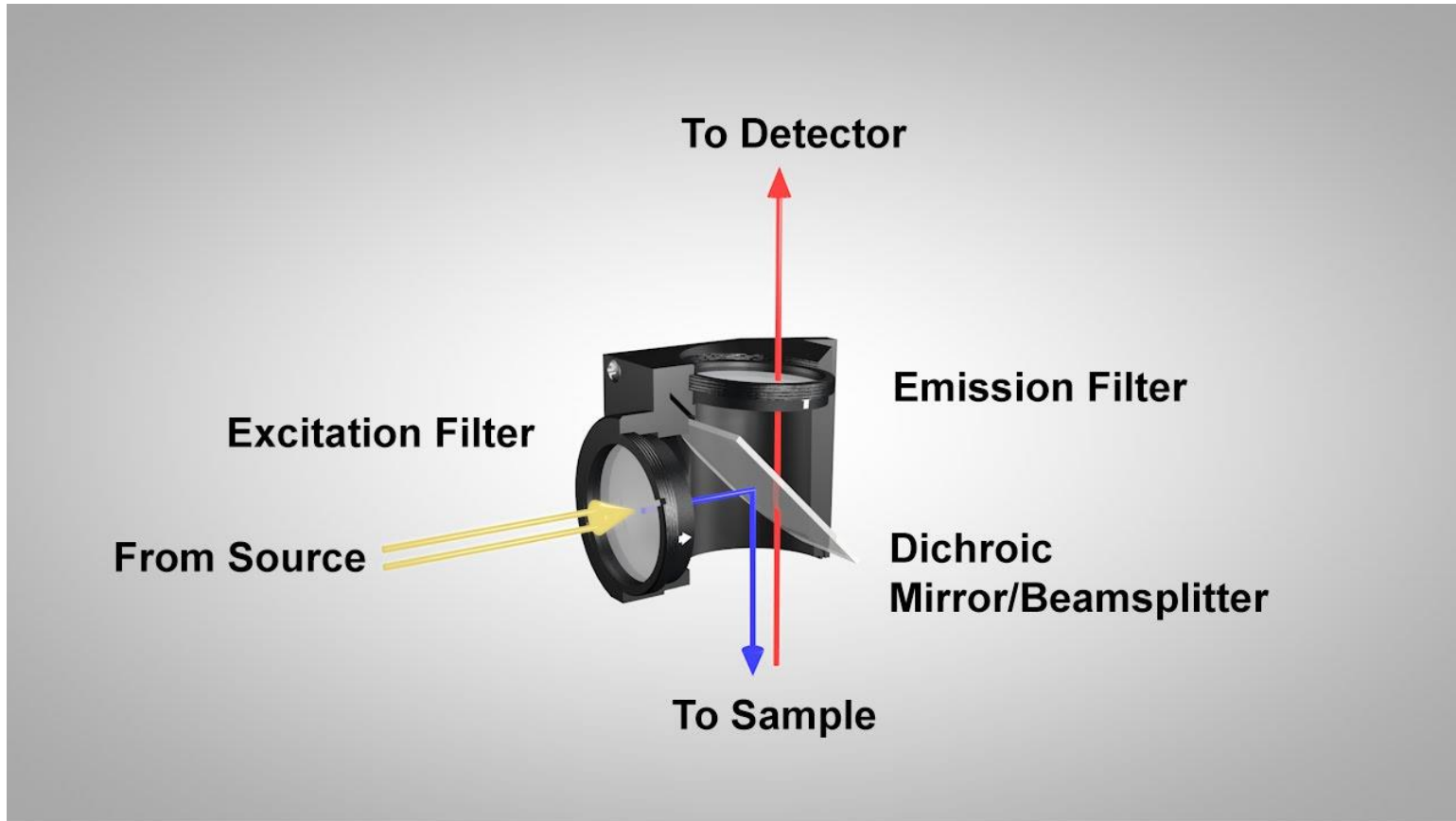




# Filters Attaching to Top and Side of Cube

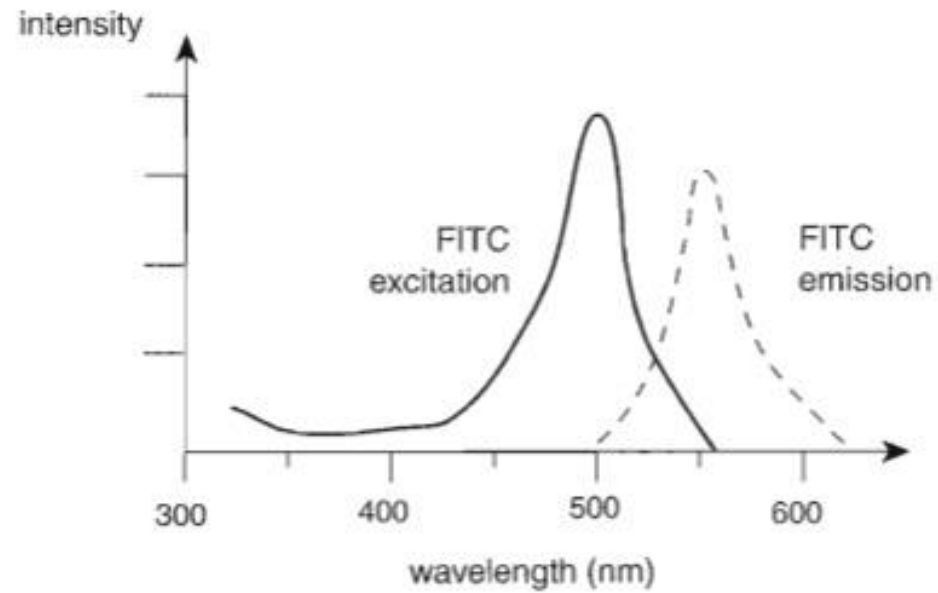


# Light Paths

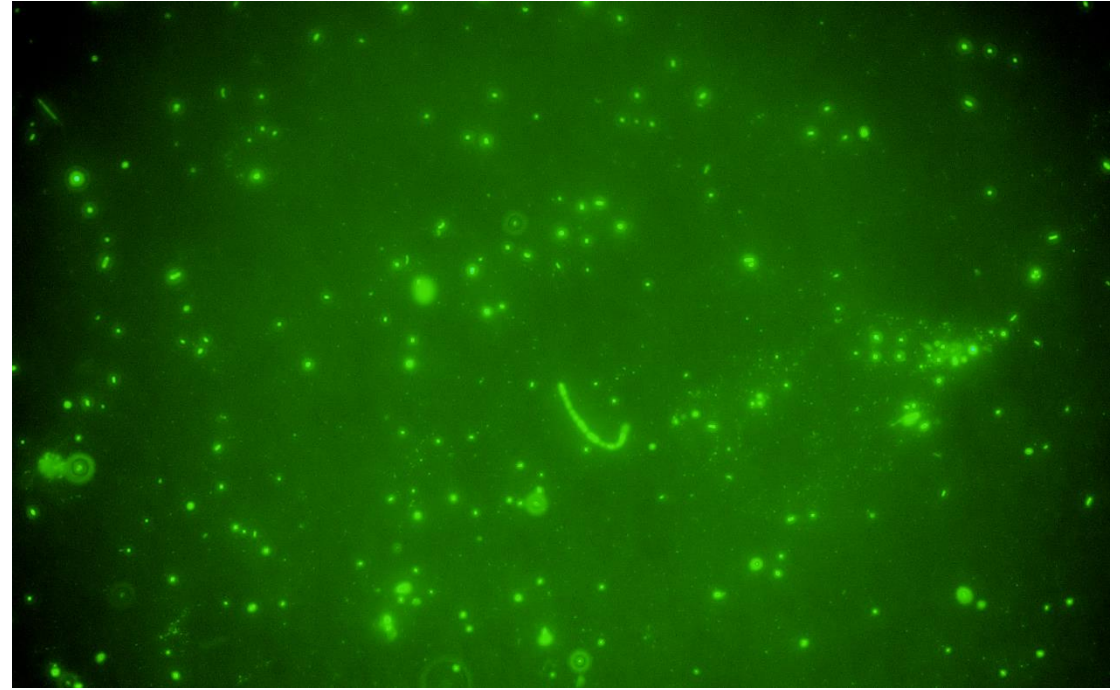
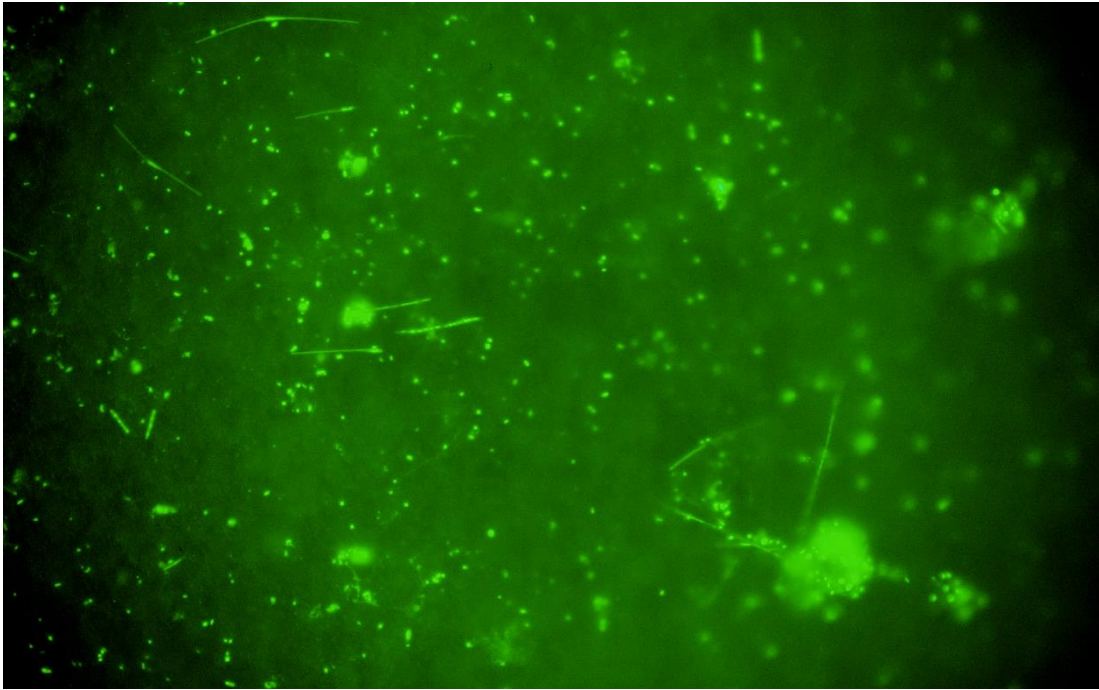




# Excitation and Emission of The Filter Cube



# Examples of Seawater Bacteria



# CellSens Standard Software

The screenshot displays the OLYMPUS cellSens Standard software interface. The main window shows a fluorescence microscopy image of a sample, overlaid with a grid for object counting. The grid is labeled with letters A through J and numbers 1 through 10. The image is titled "ST1B\_1.6ml\_wash\_image169\_1".

The software interface includes a menu bar (File, Edit, View, Acquire, Image, Process, Measure, Tools, Window, Help) and a toolbar. The "Object Counting" panel on the right shows the following classes:

- < Enter class name >
- ST1B\_1.6ml\_wash\_image169\_1
- ST1B\_1.6ml\_wash\_image169\_3
- ST1B\_1.6ml\_wash\_image169\_2

The "Object Counting Documents" panel lists the following files:

- Image\_169.tif
- Image\_170.tif
- Image\_171.tif
- Image\_172.tif
- Image\_177.tif
- Image\_178.tif
- Image\_179.tif

The "Class Results" table shows the following data:

Class Results	Count	Percent
ST1B_1.6ml_wash_image170_1	45	8.7%
ST1B_1.6ml_wash_image169_1	42	8.1%
ST1B_1.6ml_wash_image169_3	39	7.5%
ST1B_1.6ml_wash_image170_2	47	9.1%
ST1B_1.6ml_wash_image170_3	48	9.3%
ST1B_1.6ml_wash_image171_1	58	11.2%
ST1B_1.6ml_wash_image169_2	48	9.3%
ST2B_1.6ml_wash_image1	39	7.5%
ST2B_1.6ml_wash_image172_1	51	9.8%
ST2B_1.6ml_wash_image177_1	59	11.4%
ST2B_1.6ml_wash_image179_1	42	8.1%
Total	518	100.0%