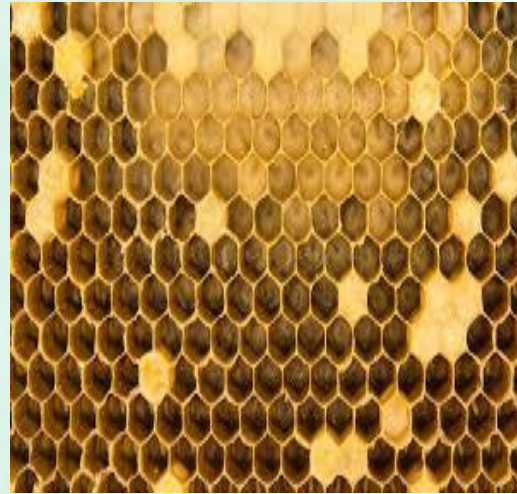


Disgusting Clusters: Assessing the Visual Characteristics of Trypophobia



Dr. Nate Pipitone

Assistant Professor, Dep. of Psychology
Florida Gulf Coast University

What is trypophobia? What are trypophobic images? Do you have trypophobia? This STEMinar will address these questions and will provide a more detailed analysis of what exactly leads some people to view trypophobic images as “kind of pretty” while others are “absolutely grossed out!” Participants will learn about what basic image properties seem to play the biggest role in the trypophobic response. Past and current research conducted by two FGCU psychology faculty members and several undergraduate researchers will be discussed.

Wednesday October 7th, 2:30-3:30 PM

ZOOM info at www.fgcu.edu/whitakercenter