

Avis/Budget is committed to employee and customer safety.



Disinfectant Cleaning

- Vehicle disinfectant cleaning is performed after other standard vehicle cleaning.
- Vehicle disinfectant cleaning focuses on high-touch points.
- Recommend using a fresh, clean wiping cloth or paper towels for each vehicle. After each vehicle cleaning, dispose of or launder wiping cloth.

Vehicle Disinfectant Cleaning Program

WHAT TOOLS DO YOU NEED?



Disinfectant
Concentrate



Hand Pump



Properly labeled spray
bottle with disinfectant
solution.



Microfiber
Cloth/Paper
Towel



Product Preparation

- Remove cap from bottle of disinfectant concentrate
- Insert hand pump into bottle of disinfectant concentrate and thread on tightly
- Use a properly labeled spray bottle
- Dispense one pump (1 oz) of disinfectant concentrate into spray bottle
- Fill bottle with water
- Insert trigger sprayer into spray bottle and thread on tightly



**Peroxide Multi Surface
Cleaner and Disinfectant**

Vehicle Disinfectant Cleaning Program

HIGH-TOUCH POINTS ARE IN TWO GROUPS –

- NON-ELECTRONIC SURFACES
- ELECTRONIC SURFACES

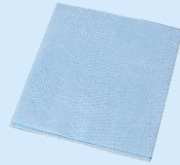


NON-ELECTRONIC SURFACES		ELECTRONIC SURFACES
Door Handles and Frame	Gear Shift	Key fobs
Trunk Entry	Dashboard Surfaces	Ignition (Push Button/Key)
Fuel Access Door and Gas Cap	Storage Compartments	Dashboard controls
Seat Belt Connectors	Non-Fabric Seats and Armrests	Touchscreens
Seat Adjustment Levers	Glass and Mirrors	Steering Wheel/Horn*
		Rearview Mirror*

*If Steering Wheel/Horn, or Rearview Mirror are non-electronic, clean as a Non-Electronic Surface

Vehicle Disinfectant Cleaning Program

WHAT TOOLS DO YOU NEED?



Microfiber
Cloth/Paper
Towel

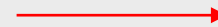


Properly labeled spray bottle
with disinfectant solution.



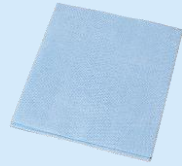
Product use

- **Non-Electronic Surfaces:**
Spray solution directly on the surface and allow 45 seconds of wet contact time, wipe with cloth
- **Electronic Surfaces:**
Avoid over-wetting electronic surfaces. Spray onto wiping cloth first then wipe surface clean



Vehicle Disinfectant Cleaning Program

WHAT TOOLS DO YOU NEED?



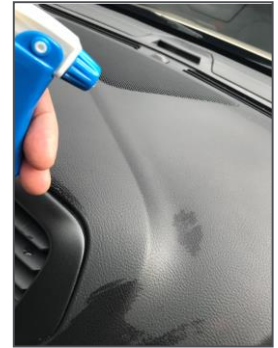
Microfiber Cloth/Paper Towel



Properly labeled spray bottle with disinfectant solution.

PRODUCT USE

- Spray solution onto surface
- Allow to remain wet for 45 seconds
- Wipe surface clean



Non-Electronic Surfaces



Door Handles & Frame



Trunk Entry



Fuel Access Door and Gas Cap



Seatbelt Connectors and Seat Adjustment Levers



Gear Shift



Dashboard Surfaces and Storage Compartments



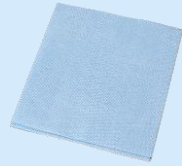
Non-fabric Seats & Armrests



Glass and Mirrors

Vehicle Disinfectant Cleaning Program

WHAT TOOLS DO YOU NEED?



Microfiber Cloth/Paper Towel



Properly labeled spray bottle with disinfectant solution.

PRODUCT USE

- Do not spray directly onto electronic surfaces
- Spray solution onto wiping towel
- Wipe surface clean



Electronic Surfaces



Key Fobs



Ignition (Push Button/Key)



Dashboard Controls



Touchscreens



Steering Wheel/Horn*



Rearview Mirror*

*If Steering Wheel/Horn, or Rearview Mirror is non-electronic, clean as a Non-Electronic Surface